

## Product datasheet for **TA337243**

### PRDM11 Rabbit Polyclonal Antibody

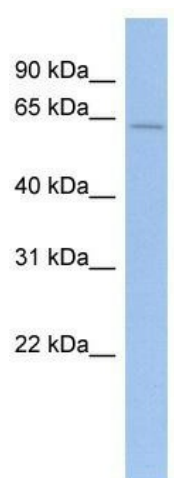
#### Product data:

Product Type:	Primary Antibodies
Applications:	WB
Recommended Dilution:	WB
Reactivity:	Human
Host:	Rabbit
Isotype:	IgG
Clonality:	Polyclonal
Immunogen:	The immunogen for anti-PRDM11 antibody: synthetic peptide directed towards the middle region of human PRDM11. Synthetic peptide located within the following region: PGEWLRVWYSEDYMKRLHSMSQETIHRNLARGEKRLQREKSEQVLDNPED
Formulation:	Liquid. Purified antibody supplied in 1x PBS buffer with 0.09% (w/v) sodium azide and 2% sucrose. <i>Note that this product is shipped as lyophilized powder to China customers.</i>
Purification:	Affinity Purified
Conjugation:	Unconjugated
Storage:	Store at -20°C as received.
Stability:	Stable for 12 months from date of receipt.
Predicted Protein Size:	58 kDa
Gene Name:	PR domain 11
Database Link:	<a href="#">NP_064614</a> <a href="#">Entrez Gene 56981 Human</a> <a href="#">Q9NQV5</a>
Background:	The specific function of this protein remains unknown.
Synonyms:	PFM8
Note:	Immunogen Sequence Homology: Human: 100%; Dog: 93%; Pig: 93%; Rat: 93%; Rabbit: 93%; Horse: 86%; Mouse: 86%; Bovine: 86%; Guinea pig: 86%
Protein Families:	Druggable Genome



[View online »](#)

## Product images:



WB Suggested Anti-PRDM11 Antibody Titration:  
0.2-1 ug/ml; ELISA Titer: 1:1562500; Positive  
Control: Human Spleen