

Product datasheet for **TA337242**

PRDM8 Rabbit Polyclonal Antibody

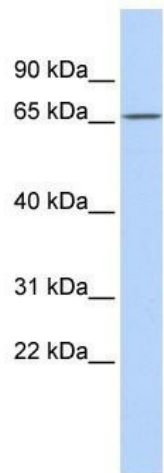
Product data:

| | |
|-------------------------|---|
| Product Type: | Primary Antibodies |
| Applications: | WB |
| Recommended Dilution: | WB |
| Reactivity: | Human |
| Host: | Rabbit |
| Isotype: | IgG |
| Clonality: | Polyclonal |
| Immunogen: | The immunogen for anti-PRDM8 antibody: synthetic peptide directed towards the N terminal of human PRDM8. Synthetic peptide located within the following region: PENAIFGPCVLSHTSLYDSIAFIALKSTDKRTVPYIFRVDTSAANGSSEG |
| Formulation: | Liquid. Purified antibody supplied in 1x PBS buffer with 0.09% (w/v) sodium azide and 2% sucrose. <i>Note that this product is shipped as lyophilized powder to China customers.</i> |
| Purification: | Affinity Purified |
| Conjugation: | Unconjugated |
| Storage: | Store at -20°C as received. |
| Stability: | Stable for 12 months from date of receipt. |
| Predicted Protein Size: | 72 kDa |
| Gene Name: | PR domain 8 |
| Database Link: | NP_064611 Entrez Gene 56978 Human Q9NQV8 |
| Background: | PRDM8 may be involved in transcriptional regulation. |
| Synonyms: | PFM5 |
| Note: | Immunogen Sequence Homology: Dog: 100%; Pig: 100%; Rat: 100%; Horse: 100%; Human: 100%; Mouse: 100%; Bovine: 100%; Rabbit: 100%; Guinea pig: 100%; Zebrafish: 93% |
| Protein Families: | Druggable Genome, Transcription Factors |



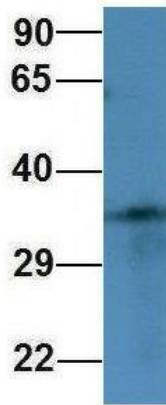
[View online »](#)

Product images:



WB Suggested Anti-PRDM8 Antibody Titration:
0.2-1 ug/ml; ELISA Titer: 1:312500; Positive
Control: MCF7 cell lysate

PRDM8



Rabbit Anti-PRDM8
Sample Type: Human 293T
Antibody Concentration: 1ug/mL

Host: Rabbit; Target Name: PRDM8; Sample
Tissue: 293T; Antibody Dilution: 1.0 ug/ml