

## Product datasheet for **TA337239**

### SMARCAD1 Rabbit Polyclonal Antibody

#### Product data:

|                         |   |
|-------------------------|---|
| Product Type:           | Primary Antibodies  |
| Applications:           | WB  |
| Recommended Dilution:   | WB  |
| Reactivity:             | Human   |
| Host:                   | Rabbit  |
| Isotype:                | IgG   |
| Clonality:              | Polyclonal  |
| Immunogen:              | The immunogen for anti-SMARCAD1 antibody: synthetic peptide directed towards the N terminal of human SMARCAD1. Synthetic peptide located within the following region: EEDEFNDQSIKTRLDHGEESSNESAESSSNWEKQESIVLKLQKEFPNFD |
| Formulation:            | Liquid. Purified antibody supplied in 1x PBS buffer with 0.09% (w/v) sodium azide and 2% sucrose.<br><i>Note that this product is shipped as lyophilized powder to China customers.</i>                                 |
| Purification:           | Affinity Purified   |
| Conjugation:            | Unconjugated  |
| Storage:                | Store at -20°C as received.   |
| Stability:              | Stable for 12 months from date of receipt.  |
| Predicted Protein Size: | 117 kDa   |
| Gene Name:              | SWI/SNF-related, matrix-associated actin-dependent regulator of chromatin, subfamily a, containing DEAD/H box 1   |
| Database Link:          | <a href="#">NP_064544</a><br><a href="#">Entrez Gene 56916 Human</a><br><a href="#">Q9H4L7</a>  |
| Background:             | SMARCAD1 belongs to the SNF2/RAD54 helicase family. It contains 2 CUE domains, 1 helicase ATP-binding domain, and 1 helicase C-terminal domain. It is a probable ATP-dependent DNA helicase.                            |
| Synonyms:               | ADERM; ETL1; HEL1   |

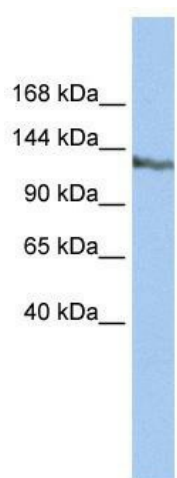


[View online »](#)

**Note:** Immunogen Sequence Homology: Dog: 100%; Pig: 100%; Horse: 100%; Human: 100%; Rabbit: 93%; Guinea pig: 93%; Bovine: 92%; Rat: 86%

**Protein Families:** Druggable Genome, Stem cell - Pluripotency, Transcription Factors

**Product images:**



WB Suggested Anti-SMARCAD1 Antibody  
Titration: 0.2-1 ug/ml; ELISA Titer: 1:62500;  
Positive Control: HepG2 cell lysate