

## Product datasheet for **TA337238**

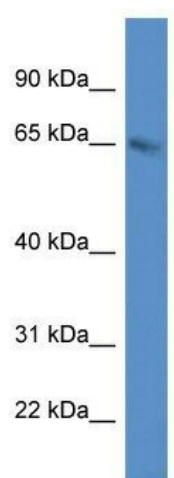
### **METTL3 Rabbit Polyclonal Antibody**

#### **Product data:**

<b>Product Type:</b>	Primary Antibodies
<b>Applications:</b>	WB
<b>Recommended Dilution:</b>	WB
<b>Reactivity:</b>	Human
<b>Host:</b>	Rabbit
<b>Isotype:</b>	IgG
<b>Clonality:</b>	Polyclonal
<b>Immunogen:</b>	The immunogen for anti-METTL3 antibody: synthetic peptide directed towards the C terminal of human METTL3. Synthetic peptide located within the following region: KIELFGRPHNVQPNWITLGNQLDGIHLLDPDVARFKQRYPDGIISKPKN
<b>Formulation:</b>	Liquid. Purified antibody supplied in 1x PBS buffer with 0.09% (w/v) sodium azide and 2% sucrose. <i>Note that this product is shipped as lyophilized powder to China customers.</i>
<b>Purification:</b>	Affinity Purified
<b>Conjugation:</b>	Unconjugated
<b>Storage:</b>	Store at -20°C as received.
<b>Stability:</b>	Stable for 12 months from date of receipt.
<b>Predicted Protein Size:</b>	64 kDa
<b>Gene Name:</b>	methyltransferase like 3
<b>Database Link:</b>	<a href="#">NP_062826</a> <a href="#">Entrez Gene 56339 Human</a> <a href="#">Q86U44</a>
<b>Background:</b>	This gene encodes the 70 kDa subunit of MT-A which is part of N6-adenosine-methyltransferase. This enzyme is involved in the posttranscriptional methylation of internal adenosine residues in eukaryotic mRNAs, forming N6-methyladenosine.
<b>Synonyms:</b>	IME4; M6A; MT-A70; Spo8
<b>Note:</b>	Immunogen Sequence Homology: Dog: 100%; Pig: 100%; Rat: 100%; Goat: 100%; Horse: 100%; Human: 100%; Mouse: 100%; Bovine: 100%; Rabbit: 100%; Guinea pig: 100%; Zebrafish: 86%



[View online »](#)

**Product images:**

WB Suggested Anti-METTL3 Antibody; Titration: 1.0 ug/ml; Positive Control: HepG2 Whole Cell  
METTL3 is supported by BioGPS gene expression data to be expressed in HepG2