

Product datasheet for **TA337236**

WDR45L (WDR45B) Rabbit Polyclonal Antibody

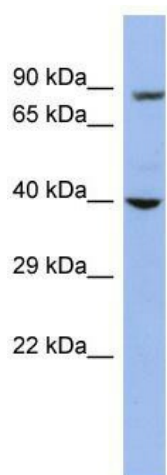
Product data:

Product Type:	Primary Antibodies
Applications:	WB
Recommended Dilution:	WB
Reactivity:	Human
Host:	Rabbit
Isotype:	IgG
Clonality:	Polyclonal
Immunogen:	The immunogen for anti-WDR45L antibody: synthetic peptide directed towards the middle region of human WDR45L. Synthetic peptide located within the following region: HGTVHIFAAEDPKRNKQSSLASASFLPKYFSSKWSFSKFQVPSGSPCICA
Formulation:	Liquid. Purified antibody supplied in 1x PBS buffer with 0.09% (w/v) sodium azide and 2% sucrose.
Purification:	Affinity Purified
Conjugation:	Unconjugated
Storage:	Store at -20°C as received.
Stability:	Stable for 12 months from date of receipt.
Predicted Protein Size:	38 kDa
Gene Name:	WD repeat domain 45B
Database Link:	NP_062559 Entrez Gene 56270 Human Q5MNZ6
Background:	WDR45L is a member of the WIPI or SVP1 family of WD40 repeat-containing proteins. The protein contains seven WD40 repeats that are thought to fold into a beta-propeller structure that mediates protein-protein interactions, and a conserved motif for intera
Synonyms:	WDR45L; WIPI-3; WIPI3
Note:	Immunogen Sequence Homology: Dog: 100%; Pig: 100%; Rat: 100%; Horse: 100%; Human: 100%; Mouse: 100%; Bovine: 100%; Rabbit: 100%; Zebrafish: 100%; Guinea pig: 100%



[View online »](#)

Product images:



WB Suggested Anti-WDR45L Antibody Titration:
0.2-1 ug/ml; ELISA Titer: 1:312500; Positive
Control: OVCAR-3 cell lysate WDR45B is
supported by BioGPS gene expression data to be
expressed in OVCAR3