

Product datasheet for **TA337233**

TIP120A (CAND1) Rabbit Polyclonal Antibody

Product data:

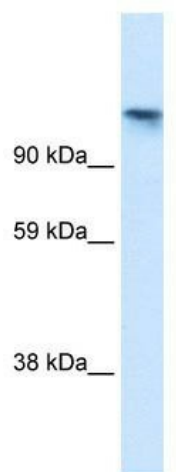
Product Type:	Primary Antibodies
Applications:	WB
Recommended Dilution:	WB
Reactivity:	Human, Mouse
Host:	Rabbit
Isotype:	IgG
Clonality:	Polyclonal
Immunogen:	The immunogen for anti-TIP120A antibody: synthetic peptide directed towards the N terminal of human TIP120A. Synthetic peptide located within the following region: TVIGELPPASSGSALAANVCKKITGRLTSAIAKQEDVSVQLEALDIMADM
Formulation:	Liquid. Purified antibody supplied in 1x PBS buffer with 0.09% (w/v) sodium azide and 2% sucrose. <i>Note that this product is shipped as lyophilized powder to China customers.</i>
Purification:	Protein A purified
Conjugation:	Unconjugated
Storage:	Store at -20°C as received.
Stability:	Stable for 12 months from date of receipt.
Predicted Protein Size:	136 kDa
Gene Name:	cullin associated and neddylation dissociated 1
Database Link:	NP_060918 Entrez Gene 71902 Mouse Entrez Gene 55832 Human Q86VP6
Background:	TIP120A functions as a negative regulator of SCF E3 ubiquitin ligases and may modulate other cullin ligases in a similar fashion.
Synonyms:	TIP120; TIP120A
Note:	Immunogen Sequence Homology: Dog: 100%; Pig: 100%; Rat: 100%; Horse: 100%; Human: 100%; Mouse: 100%; Bovine: 100%; Rabbit: 100%; Zebrafish: 100%; Guinea pig: 100%



[View online »](#)

Protein Families: Transcription Factors

Product images:



WB Suggested Anti-TIP120A Antibody Titration:
1.25 ug/ml; ELISA Titer: 1:62500; Positive Control:
Human brain