

Product datasheet for **TA337232**

TIP120A (CAND1) Rabbit Polyclonal Antibody

Product data:

Product Type:	Primary Antibodies
Applications:	WB
Recommended Dilution:	WB
Reactivity:	Human, Mouse
Host:	Rabbit
Isotype:	IgG
Clonality:	Polyclonal
Immunogen:	The immunogen for anti-CAND1 antibody: synthetic peptide directed towards the middle region of human CAND1. Synthetic peptide located within the following region: AALLTIPEAEKSPLMSEFQSQISSNPELAAIFESI QKDSSTNLESMDTS
Formulation:	Liquid. Purified antibody supplied in 1x PBS buffer with 0.09% (w/v) sodium azide and 2% sucrose. <i>Note that this product is shipped as lyophilized powder to China customers.</i>
Purification:	Affinity Purified
Conjugation:	Unconjugated
Storage:	Store at -20°C as received.
Stability:	Stable for 12 months from date of receipt.
Predicted Protein Size:	136 kDa
Gene Name:	cullin associated and neddylation dissociated 1
Database Link:	NP_060918 Entrez Gene 71902 Mouse Entrez Gene 55832 Human Q86VP6
Background:	CAND1 enhances transcription from various types of promoters. It is a regulatory protein that interferes with the assembly of the SCF (SKP1-CUL1-F-box protein) ubiquitin ligase complex and thereby down-regulates ubiquitination of target proteins. CAND1 prevents neddylation of CUL1 by physically blocking access to the neddylation site. CAND1 disrupts interactions between CUL1 and SKP1A and between CUL1 and F-box proteins.
Synonyms:	TIP120; TIP120A

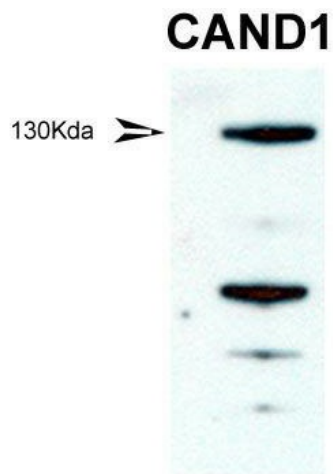


[View online >](#)

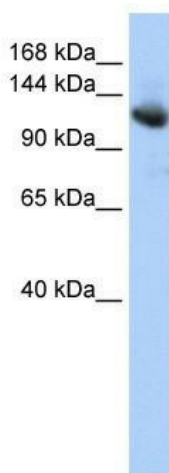
Note: Immunogen Sequence Homology: Dog: 100%; Pig: 100%; Rat: 100%; Horse: 100%; Human: 100%; Mouse: 100%; Bovine: 100%; Rabbit: 100%; Guinea pig: 100%; Zebrafish: 86%

Protein Families: Transcription Factors

Product images:



WB Suggested Anti-CAND1 Antibody ; Titration: 1 ug/ml; Positive Control: mouse testis



WB Suggested Anti-CAND1 Antibody Titration: 0.2-1 ug/ml; ELISA Titer: 1:312500; Positive Control: HepG2 cell lysate