

## Product datasheet for **TA337231**

### DCP1A Rabbit Polyclonal Antibody

#### Product data:

Product Type:	Primary Antibodies
Applications:	WB
Recommended Dilution:	WB
Reactivity:	Human
Host:	Rabbit
Isotype:	IgG
Clonality:	Polyclonal
Immunogen:	The immunogen for anti-DCP1A antibody: synthetic peptide directed towards the N terminal of human DCP1A. Synthetic peptide located within the following region: EEMPSGSQDKSAPSGHKHLTV EELFGTSLPKEQPAVVGLDSEEMERLPGD
Formulation:	Liquid. Purified antibody supplied in 1x PBS buffer with 0.09% (w/v) sodium azide and 2% sucrose. <i>Note that this product is shipped as lyophilized powder to China customers.</i>
Purification:	Protein A purified
Conjugation:	Unconjugated
Storage:	Store at -20°C as received.
Stability:	Stable for 12 months from date of receipt.
Predicted Protein Size:	56 kDa
Gene Name:	decapping mRNA 1A
Database Link:	<a href="#">NP_060873</a> <a href="#">Entrez Gene 55802 Human</a> <a href="#">Q9NPI6</a>
Background:	Decapping is a key step in general and regulated mRNA decay. The protein encoded by this gene is a decapping enzyme. This protein and another decapping enzyme form a decapping complex, which interacts with the nonsense-mediated decay factor hUpf1 and may be recruited to mRNAs containing premature termination codons. This protein also participates in the TGF-beta signaling pathway.
Synonyms:	HSA275986; Nbla00360; SMAD4IP1; SMIF



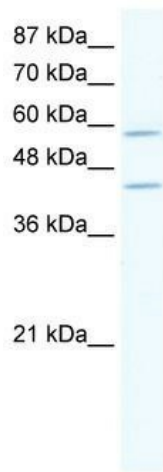
[View online »](#)

**Note:** Immunogen Sequence Homology: Dog: 100%; Pig: 100%; Rat: 100%; Human: 100%; Mouse: 100%; Bovine: 100%; Rabbit: 100%; Guinea pig: 100%; Horse: 92%

**Protein Families:** Transcription Factors

**Protein Pathways:** RNA degradation

**Product images:**



WB Suggested Anti-DCP1A Antibody Titration: 2.5 ug/ml; ELISA Titer: 1:62500; Positive Control: Jurkat cell lysate DCP1A is supported by BioGPS gene expression data to be expressed in Jurkat