

Product datasheet for **TA337230**

KLHL26 Rabbit Polyclonal Antibody

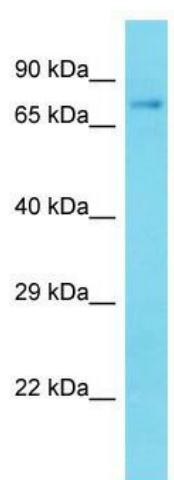
Product data:

Product Type:	Primary Antibodies
Applications:	WB
Recommended Dilution:	WB
Reactivity:	Mouse
Host:	Rabbit
Isotype:	IgG
Clonality:	Polyclonal
Immunogen:	The immunogen for Anti-Klhl26 antibody is synthetic peptide directed towards the N-terminal region of Mouse Klhl26. Synthetic peptide located within the following region: GQLLDVWLTVNSEAFHAHKVLAACSDYFRAMFTGGMREANQAVIQLQGV
Formulation:	Liquid. Purified antibody supplied in 1x PBS buffer with 0.09% (w/v) sodium azide and 2% sucrose.
Purification:	Affinity Purified
Conjugation:	Unconjugated
Storage:	Store at -20°C as received.
Stability:	Stable for 12 months from date of receipt.
Predicted Protein Size:	67 kDa
Gene Name:	kelch like family member 26
Database Link:	NP_060786 Entrez Gene 234378 Mouse Q53HC5
Background:	The function of this protein remains unknown.
Synonyms:	FLJ11078
Note:	Immunogen Sequence Homology: Pig: 100%; Rat: 100%; Human: 100%; Guinea pig: 100%; Dog: 93%; Horse: 93%; Mouse: 86%; Bovine: 86%; Rabbit: 86%



[View online »](#)

Product images:



Host: Rabbit; Target Name: Klhl26; Sample
Tissue: Mouse Liver lysates; Antibody Dilution: 1.0
ug/ml