

Product datasheet for **TA337214**

NALP6 (NLRP6) Rabbit Polyclonal Antibody

Product data:

Product Type:	Primary Antibodies
Applications:	IHC, WB
Recommended Dilution:	WB: 1-2 ug/ml, IHC: 5 ug/ml , IHC-P: 5 ug/ml
Reactivity:	Human
Host:	Rabbit
Clonality:	Polyclonal
Immunogen:	Partial recombinant protein made to an N-terminal portion of human NALP6 (between amino acids 10-200) [UniProt P59044].
Formulation:	PBS containing 0.05% BSA, 0.05% Sodium Azide. Store at 4C short term. Aliquot and store at -20C long term. Avoid freeze-thaw cycles.
Concentration:	lot specific
Purification:	Protein A purified
Conjugation:	Unconjugated
Storage:	Store at -20°C as received.
Stability:	Stable for 12 months from date of receipt.
Gene Name:	NLR family, pyrin domain containing 6
Database Link:	NP_612202 Entrez Gene 171389 Human P59044



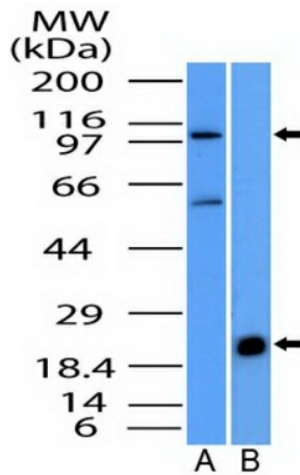
[View online »](#)

Background:

NALP6 / NLRP6 (NACHT, LRR and PYD domains-containing protein 6) belongs to NLRP family of proteins - NLRP1, NLRP3, NLRC4 and NLRP6 - which functions as innate sensors of endogenous/exogenous stress or damage-associated molecular patterns (DAMPs). NLRPs are vital components of inflammasomes which are the cytoplasmic multi-protein complexes that coordinate several functions during inflammation and homeostasis in various type of cells/tissues. NLRP6 is a newly characterized NLR protein which is highly expressed in the intestinal epithelium as well as the granulocytes, and to a relatively lower levels on T-cells. NALP6 acts as an arginine-vasopressin V2 receptor and has been suggested to contribute to AVP-mediated regulation of renal salt-water balance, glucose and lipid metabolism, apoptosis, and/or cell cycle. It implicates in the activation of CASP1 via ASC, promotion of NFκB activation and cAMP accumulation stimulation. NALP6 has been shown to actively participate in inflammasome signaling and to play critical roles in defense against infection, auto-inflammation and tumorigenesis.

Synonyms:

AVR; CLR11.4; NALP6; NAVR; PAN3; PYPAF5

Product images:


Western Blot: NALP6 Antibody TA337214 - WB detection of NALP6 protein (NACHT, LRR and PYD domains-containing protein 6) in (A) Jurkat cells lysate and (B) partial recombinant protein using NALP6 antibody at a concentration of 1 ug/ml for lysate and 0.1



Immunohistochemistry-Paraffin: NALP6 Antibody TA337214 - IHC-P analysis of NALP6 protein in a section of human breast normal tissue using NALP6 antibody at a concentration of 5 ug/ml. The breast ductal /acinar epithelium showed a strong NALP6 positivity