

## Product datasheet for **TA337191**

### CCR1 Rabbit Polyclonal Antibody

#### Product data:

Product Type:	Primary Antibodies
Applications:	IHC
Recommended Dilution:	IHC: 1:10-1:500, IHC-P: 5 ug/ml
Reactivity:	Human
Host:	Rabbit
Clonality:	Polyclonal
Immunogen:	Synthetic peptide corresponding to the 2nd extracellular domain of human C-C Chemokine Receptor 1 (CCR1)
Formulation:	PBS, 30% glycerol, 0.1% Sodium Azide. Aliquot and store at -20C or -80C. Avoid freeze-thaw cycles.
Concentration:	lot specific
Purification:	Immunogen affinity purified
Conjugation:	Unconjugated
Storage:	Store at -20°C as received.
Stability:	Stable for 12 months from date of receipt.
Gene Name:	C-C motif chemokine receptor 1
Database Link:	<a href="#">NP_001286</a> <a href="#">Entrez Gene 1230 Human</a> <a href="#">P32246</a>
Background:	CCR1, a Chemokine Receptor, affects stem cell proliferation and mediates systemic inflammatory responses. This receptor is stimulated by the beta chemokines RANTES, MCP-1, and MIP-1 alpha. Disruption of CCR1 enhances protection from pulmonary inflammation and reduces the development of respiratory distress syndrome in rat. CCR1 is widely expressed, particularly in hematopoietic cells from blood, vessels, and bone marrow. This receptor has also been reported to be expressed in lung, brain, placenta, heart, skeletal muscle, and kidney. ESTs have been isolated from blood, kidney, liver/spleen, lung, placenta, uterus, and vessel libraries.
Synonyms:	CD191; CKR-1; CKR1; CMKBR1; HM145; MIP1aR; SCYAR1

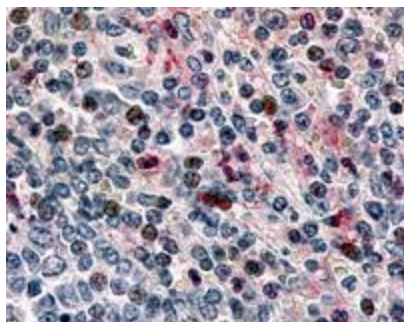


[View online »](#)

**Protein Families:** Druggable Genome, GPCR, Transmembrane

**Protein Pathways:** Chemokine signaling pathway, Cytokine-cytokine receptor interaction

**Product images:**



Immunohistochemistry-Paraffin: CCR1 Antibody TA337191 - Analysis of spleen (lymphocytes) using this antibody at 5 ug/ ml.