

Product datasheet for **TA337173**

CD36 Rabbit Polyclonal Antibody

Product data:

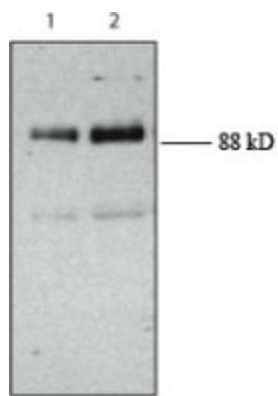
Product Type:	Primary Antibodies
Applications:	WB
Recommended Dilution:	WB: 1:200
Reactivity:	Human
Host:	Rabbit
Clonality:	Polyclonal
Immunogen:	Human CD36 amino acids 99-124.
Formulation:	PBS, 0.05% Sodium Azide. Store at 4C short term. Aliquot and store at -20C long term. Avoid freeze-thaw cycles.
Concentration:	lot specific
Purification:	Immunogen affinity purified
Conjugation:	Unconjugated
Storage:	Store at -20°C as received.
Stability:	Stable for 12 months from date of receipt.
Gene Name:	CD36 molecule
Database Link:	NP_000063 Entrez Gene 948 Human P16671

Background: CD36 is a type-B scavenger receptor that is necessary for the formation of foam cells in atherosclerotic lesions. This membrane glycoprotein can internalize fatty acids which activate PPAR and stimulate further expression of CD36. This positive feedback loop combined with the murine CD36 knock-out studies reinforces the importance of CD36 in lipid metabolism. Additionally CD36 is needed for the phagocytosis of infected erythrocytes, retinal pigment epithelial cell photoreceptor fragments, and post-apoptotic monocytes and neutrophils. CD36 expression has been monitored during hematopoietic cell differentiation and may be an indicator of tumor spreading in lymphocytic leukemia. This transmembrane glycoprotein is detected by immunoblotting at 88 kDa or 54 kDa depending on the degree of glycosylation of the receptor in your sample.



[View online »](#)

Synonyms:	BDPLT10; CHDS7; FAT; GP3B; GP4; GPIV; PASIV; SCARB3
Protein Families:	Druggable Genome, Transmembrane
Protein Pathways:	Adipocytokine signaling pathway, ECM-receptor interaction, Hematopoietic cell lineage, PPAR signaling pathway

Product images:

Lane 1: Human platelet lysate (15 µg)
Lane 2: Human platelet lysate (30 µg)

Western Blot: CD36 Antibody TA337173 - Analysis of CD36 in human platelets using this antibody at 1:200.