

Product datasheet for **TA337167**

MYD88 Mouse Monoclonal Antibody [Clone ID: 4D6]

Product data:

Product Type:	Primary Antibodies
Clone Name:	4D6
Applications:	CyTOF-ready, FC, ICC/IF, WB
Recommended Dilution:	Flow (Intracellular), Western Blot: 2 ug/ml, Flow Cytometry: 0.5ug/10 ⁶ cells-, Immunocytochemistry/ Immunofluorescence: 5ug/ml, CyTOF-ready
Reactivity:	Human
Host:	Mouse
Clonality:	Monoclonal
Immunogen:	A portion of amino acids 50-100 of human MyD88 was used as the immunogen for this antibody.
Formulation:	PBS containing 0.05% BSA, 0.05% Sodium Azide. Store at 4C short term. Aliquot and store at -20C long term. Avoid freeze-thaw cycles.
Concentration:	lot specific
Purification:	Protein G purified
Conjugation:	Unconjugated
Storage:	Store at -20°C as received.
Stability:	Stable for 12 months from date of receipt.
Gene Name:	myeloid differentiation primary response 88
Database Link:	NP_002459 Entrez Gene 4615 Human Q99836
Background:	MyD88, a protein involved in interleukin-1 (IL-1) mediated signalling was originally isolated as myeloid differentiation primary response gene (3,4). MyD88 possesses a N-terminal death domain similar to cytoplasmic segments of TNF receptor 1, Fas, and C-terminal region related to IL-1 and Toll receptors. Overexpression of MyD88 induces activation the c-Jun N-terminal kinase and NF-kB through its death domain (1,2). The C-terminus of MyD88 interacts with the IL-1 receptor and blocks NF-kB activation induced by IL-1, but not by NF-kB.
Synonyms:	MYD88D

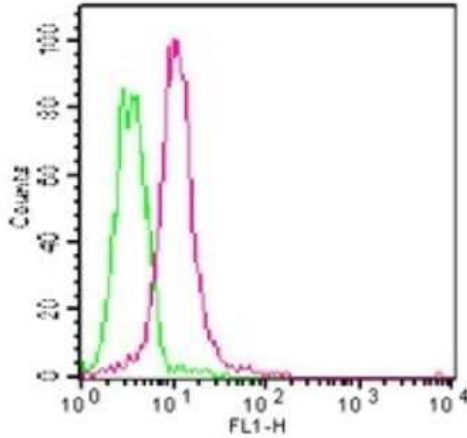


[View online »](#)

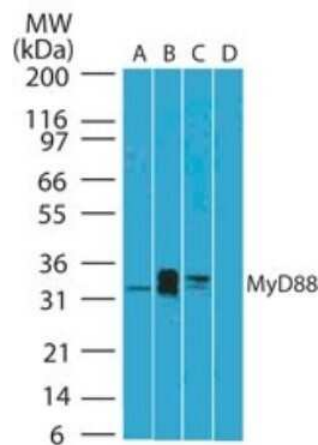
Protein Families: Druggable Genome

Protein Pathways: Apoptosis, Toll-like receptor signaling pathway

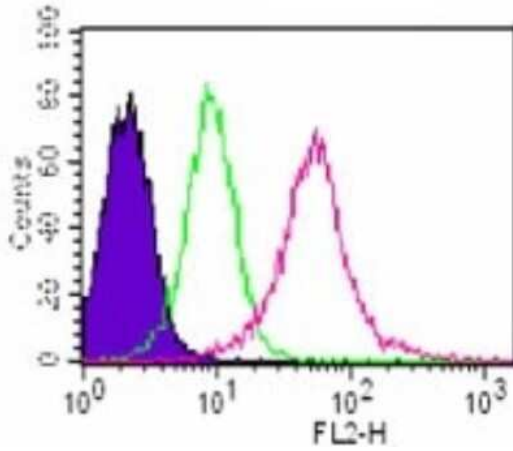
Product images:



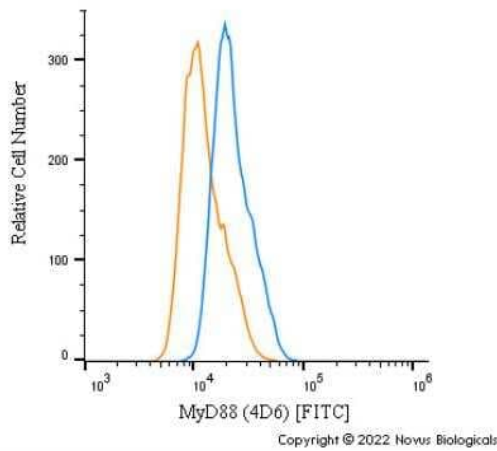
Flow (Intracellular): MyD88 Antibody (4D6) TA337167 - Analysis using the Alexa Fluor (R) 488 conjugate of TA337167. Staining of MyD88 antibody in Jurkat cells using 10 ul (0.5 ug) of MyD88 antibody. Green represents isotype control (20108); red represents anti-MyD88 antibody.



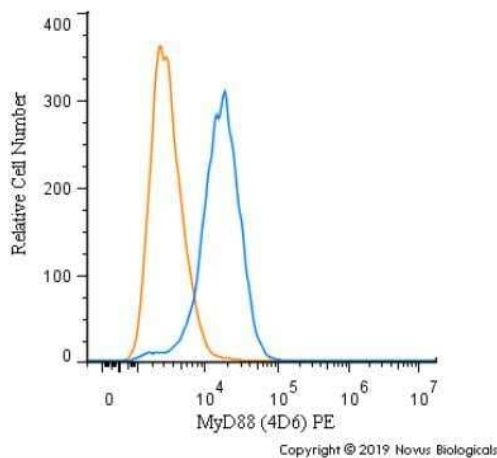
Western Blot: MyD88 Antibody (4D6) TA337167 - Analysis of MyD88 in A) human ovary, B) human prostate and Jurkat cell lysate in the C) absence and D) presence of immunizing peptide using this antibody. Goat anti-mouse Ig HRP secondary antibody and PicoTect ECL substrate solution were used for this test.



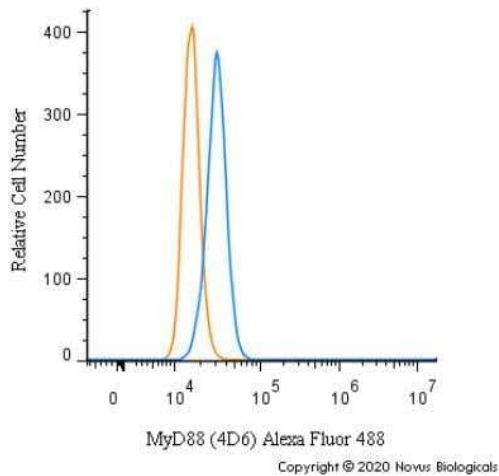
Flow Cytometry: MyD88 Antibody (4D6) TA337167 - Intracellular analysis of MyD88 antibody in Jurkat cells using 0.5 ug. Shaded histogram represents cells without antibody; green represents isotype control; red represents MyD88 antibody. This antibody was used for this test, and an anti-mouse IgG PE conjugated secondary antibody.



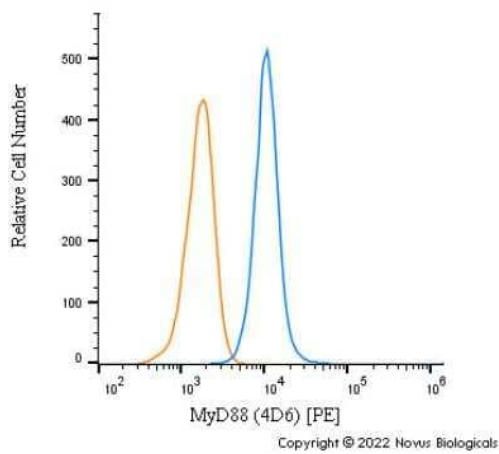
Flow Cytometry: MyD88 Antibody (4D6) - BSA Free TA337167 - An intracellular stain was performed on MCF7 cells with MyD88 Antibody (4D6) TA337167F (blue) and a matched isotype control (orange). Cells were fixed with 4% PFA and then permeabilized with 0.1% saponin. Cells were incubated in an antibody dilution of 5 ug/mL for 30 minutes at room temperature. Both antibodies were conjugated to FITC.



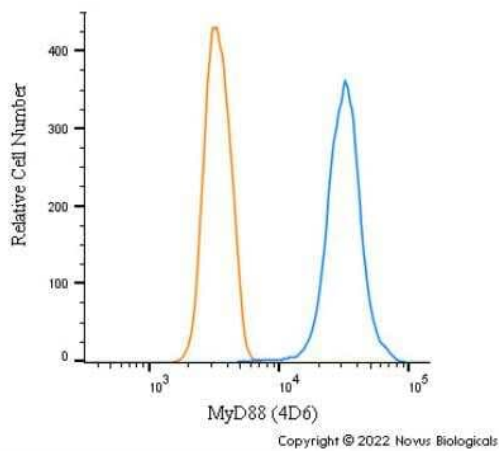
Flow Cytometry: MyD88 Antibody (4D6) TA337167 - An intracellular stain was performed on MCF7 cells with MyD88 (4D6) antibody TA337167PE (blue) and a matched isotype control (orange). Cells were fixed with 4% PFA and then permeabilized with 0.1% saponin. Cells were incubated in an antibody dilution of 2.5 ug/mL for 30 minutes at room temperature. Both antibodies were conjugated to Phycoerythrin.



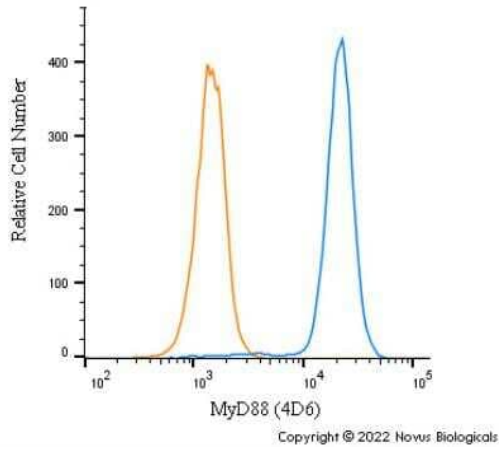
Flow Cytometry: MyD88 Antibody (4D6) TA337167 - An intracellular stain was performed on MCF7 cells with MyD88 [4D6] Antibody TA337167AF488 (blue) and a matched isotype control (orange). Cells were fixed with 4% PFA and then permeabilized with 0.1% saponin. Cells were incubated in an antibody dilution of 10 ug/mL for 30 minutes at room temperature. Both antibodies were conjugated to Alexa Fluor 488.



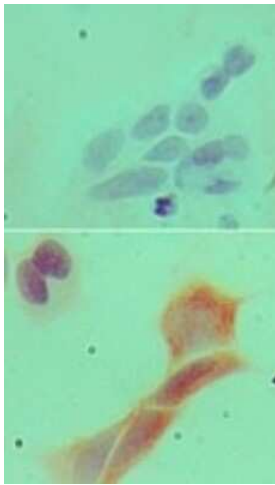
Flow Cytometry: MyD88 Antibody (4D6) - BSA Free TA337167 - An intracellular stain was performed on Jurkat cells with MyD88 Antibody (4D6) TA337167PE (blue) and a matched isotype control (orange). Cells were fixed with 4% PFA and then permeabilized with 0.1% saponin. Cells were incubated in an antibody dilution of 2.5 ug/mL for 30 minutes at room temperature. Both antibodies were conjugated to Phycoerythrin.



Flow Cytometry: MyD88 Antibody (4D6) - BSA Free TA337167 - An intracellular stain was performed on U-937 cells with MyD88 Antibody (4D6) TA337167 (blue) and a matched isotype control MAB002 (orange). Cells were fixed with 4% PFA and then permeabilized with 0.1% saponin. Cells were incubated in an antibody dilution of 1 ug/mL for 30 minutes at room temperature, followed by Mouse IgG (H+L) Cross-Adsorbed Secondary Antibody, Dylight 550 (84540, Thermo Fisher).



Flow Cytometry: MyD88 Antibody (4D6) - BSA Free TA337167 - An intracellular stain was performed on Jurkat cells with MyD88 Antibody (4D6) TA337167 (blue) and a matched isotype control MAB002 (orange). Cells were fixed with 4% PFA and then permeabilized with 0.1% saponin. Cells were incubated in an antibody dilution of 1 ug/mL for 30 minutes at room temperature, followed by Mouse IgG (H+L) Cross-Adsorbed Secondary Antibody, Dylight 550 (84540, Thermo Fisher).



Immunocytochemistry/Immunofluorescence: MyD88 Antibody (4D6) TA337167 - Analysis of MyD88 antibody in MCF-7 cells using an isotype control (top) and MyD88 Antibody (bottom) at 5 ug/ml.