

Product datasheet for **TA337161**

GPR183 Rabbit Polyclonal Antibody

Product data:

Product Type:	Primary Antibodies
Applications:	IHC, WB
Recommended Dilution:	Immunohistochemistry, Immunohistochemistry-Paraffin: 5ug/ml, Western Blot: 2-4ug/ml~
Reactivity:	Human
Host:	Rabbit
Clonality:	Polyclonal
Immunogen:	A portion of amino acids 300-350 of human EBI2 was used as the immunogen.
Formulation:	PBS containing 0.05% BSA, 0.05% Sodium Azide. Store at -20C. Avoid freeze-thaw cycles.
Concentration:	lot specific
Purification:	Protein A purified
Conjugation:	Unconjugated
Storage:	Store at -20°C as received.
Stability:	Stable for 12 months from date of receipt.
Gene Name:	G protein-coupled receptor 183
Database Link:	NP_004942 Entrez Gene 1880 Human P32249

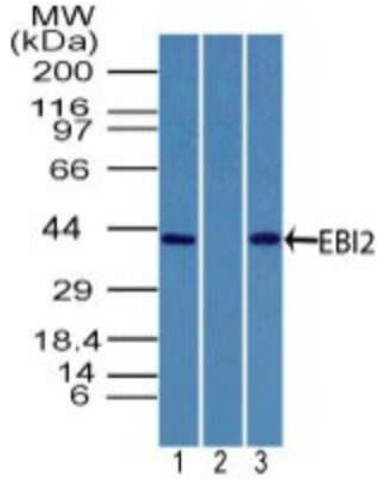
Background: G-protein coupled receptor 183 (EBI2) belongs to the G-protein coupled receptor 1 family of proteins. It is an orphan seven-transmembrane receptor originally identified as most up-regulated gene (>200-fold) in EBV-infected cells. It plays a central role during humoral immunity. It promotes activated B-cell localization in the outer follicle and interfollicular regions. Its specific expression during B-cell maturation helps position B-cells appropriately for mounting T-dependent antibody responses. It is expressed abundantly in lymphoid tissues such as spleen and lymph node, and in B- and T-lymphocytes. It is also reported to be highly expressed in lung, heart and gastrointestinal tract. EBI2 deficiency in mice led to a reduction in the early antibody response to a T-dependent antigen.

Synonyms:	EBI2; hEBI2
Protein Families:	Druggable Genome, GPCR, Transmembrane

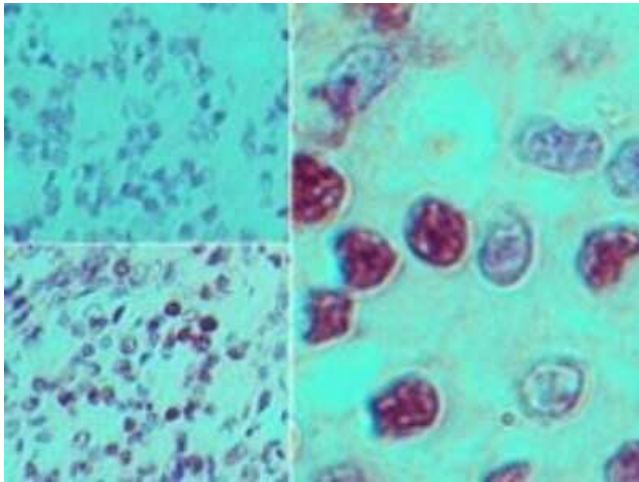


[View online »](#)

Product images:



Western Blot: EBI2/GPR183 Antibody TA337161 - Analysis of EBI2 in human brain lysate in the 1) absence and 2) presence of immunizing peptide, and 3) rat brain lysate using this antibody. Goat anti-rabbit Ig HRP secondary antibody and PicoTect ECL substrate solution were used for this test.



Immunohistochemistry-Paraffin: EBI2/GPR183 Antibody TA337161 - Analysis of EBI2 in human stomach tumor tissue using an isotype control (top left) and this antibody (bottom left, right) at 5 ug/ml.