

Product datasheet for **TA337160**

EPS8 Mouse Monoclonal Antibody [Clone ID: 18F5B11]

Product data:

Product Type:	Primary Antibodies
Clone Name:	18F5B11
Applications:	IHC, WB
Recommended Dilution:	Immunohistochemistry, Immunohistochemistry-Paraffin: 5ug/ml, Western Blot: 1-5ug/ml~
Reactivity:	Human
Host:	Mouse
Isotype:	IgG3, kappa
Clonality:	Monoclonal
Immunogen:	Amino acids 701-882 of human EPS8 protein were used as the immunogen for the EPS8 antibody.
Formulation:	PBS containing 0.05% BSA, 0.05% Sodium Azide. Store at 4C short term. Aliquot and store at -20C long term. Avoid freeze-thaw cycles.
Concentration:	lot specific
Purification:	Protein G purified
Conjugation:	Unconjugated
Storage:	Store at -20°C as received.
Stability:	Stable for 12 months from date of receipt.
Gene Name:	epidermal growth factor receptor pathway substrate 8
Database Link:	NP_004438 Entrez Gene 2059 Human Q12929



[View online »](#)

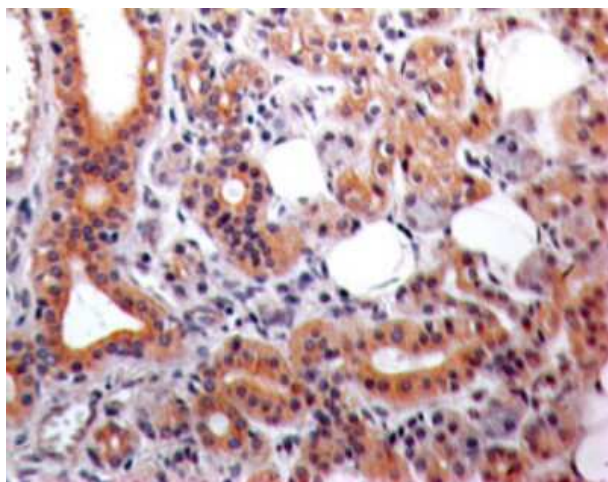
Background: EPS8, an acronym for epidermal growth factor receptor pathways substrate 8, is a signaling protein and part of the molecular complex controlling actin reorganization (1, 2). EPS8 also plays an important role in innate immunity. Through LPS activation of TLR4 and the co adaptor MyD88 protein, macrophages induce enhanced EPS8 activity typified by phagocytosis- a key innate anti-microbial defense response (3). EPS8 colocalizes with TLR4 in LPS activated macrophage immunocomplexes (3). Interestingly, EPS8 also is over expressed in malignancies including breast cancers, pancreatic cancers, and colon cancers, as examples (2-4). Antibody to EPS8 provides a tool for characterizing its functional roles in motility, adhesion, signaling pathways such as non-canonical Wnt signaling and expression in normal and neoplastic cells (5).

Synonyms: DFNB102

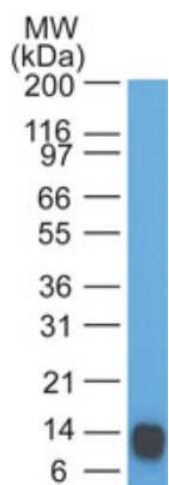
Note: Staining of formalin-fixed tissues is enhanced by boiling tissue sections in 10 mM sodium citrate buffer, pH 6.0 for 10-20 min followed by cooling at RT for 20 min.

Protein Families: Druggable Genome

Product images:



Immunohistochemistry-Paraffin: EPS8 Antibody (18F5B11) TA337160 - Formalin-fixed, paraffin-embedded human salivary gland stained with EPS8 antibody (5 ug/ml), peroxidase-conjugate and DAB chromogen.



Western Blot: EPS8 Antibody (18F5B11) TA337160
- analysis of EPS8 partial recombinant protein
using EPS8 antibody at 1 ug/ml.