

Product datasheet for **TA337158**

TMEM26 Rabbit Polyclonal Antibody

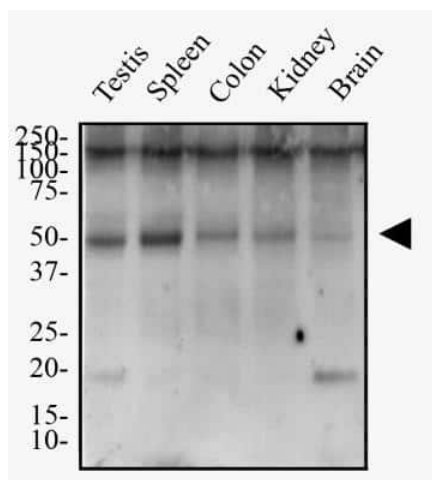
Product data:

Product Type:	Primary Antibodies
Applications:	FC, IHC, Simple Western, WB
Recommended Dilution:	Western Blot: 1 - 2 ug/mL, Simple Western: 1:20, Flow Cytometry, Immunohistochemistry, Immunohistochemistry-Paraffin
Reactivity:	Human
Host:	Rabbit
Clonality:	Polyclonal
Immunogen:	A portion of amino acids 300-350 of human Tmem26 was used as the immunogen.
Formulation:	PBS containing 0.05% BSA, 0.05% Sodium Azide. Store at 4C short term. Aliquot and store at -20C long term. Avoid freeze-thaw cycles.
Concentration:	lot specific
Purification:	Protein A purified
Conjugation:	Unconjugated
Storage:	Store at -20°C as received.
Stability:	Stable for 12 months from date of receipt.
Gene Name:	transmembrane protein 26
Database Link:	NP_848600 Entrez Gene 219623 Human Q6ZUK4
Background:	Transmembrane protein 26, or Tmem26, is a protein which spans the entire biological membrane and thus maintains three dimensional structures. Transmembrane proteins aggregate and precipitate in water. They require detergents or nonpolar solvents for extraction; although some of them (beta-barrels) can be also extracted using denaturing agents.
Synonyms:	DKFZp686D09128; MGC35010
Protein Families:	Transmembrane



[View online »](#)

Product images:



Western Blot: TMEM26 Antibody TA337158 - Total protein from Human Testis, Spleen, Colon, Kidney and Brain was separated on a 12% gel by SDS-PAGE, transferred to PVDF membrane and blocked in 5% non-fat milk in TBST. The membrane was probed with 2.0 $\mu\text{g}/\text{mL}$ anti-TMEM26 in 1% milk, and detected with an anti-rabbit HRP secondary antibody using chemiluminescence.



Simple Western: TMEM26 Antibody TA337158 - Image shows a specific band for TMEM26 in 0.5 mg/mL of Human Brain lysate. This experiment was performed under reducing conditions using the 12-230 kDa separation system.