

Product datasheet for **TA337157**

TLR7 Mouse Monoclonal Antibody [Clone ID: 4G6]

Product data:

Product Type:	Primary Antibodies
Clone Name:	4G6
Applications:	CyTOF-ready, FC, ICC/IF, IHC, WB
Recommended Dilution:	Western Blot: 10ug/ml~, Flow Cytometry: 1-2ug/10 ⁶ cells, Flow (Intracellular): 5 ug/ml, Knockout Validated, CyTOF-ready, Immunocytochemistry/ Immunofluorescence: 1:500-1:5000, Immunohistochemistry: 1:50 - 1:200, Knockdown Validated
Reactivity:	Human, Mouse
Host:	Mouse
Clonality:	Monoclonal
Immunogen:	A partial human TLR7 recombinant protein (amino acids 562-839) was used as the immunogen. 277 amino acid (AA 562- 839)~
Formulation:	PBS containing 0.05% BSA, 0.05% Sodium Azide. Store at 4C short term. Aliquot and store at -20C long term. Avoid freeze-thaw cycles.
Concentration:	lot specific
Purification:	Protein G purified
Conjugation:	Unconjugated
Storage:	Store at -20°C as received.
Stability:	Stable for 12 months from date of receipt.
Gene Name:	toll like receptor 7
Database Link:	NP_057646 Entrez Gene 170743 Mouse Entrez Gene 51284 Human Q9NYK1



[View online »](#)

Background:

TLR7 is a 1049 amino acid long highly conserved membrane protein belonging to the Toll-like receptor (TLR) family with 27 LRR (leucine-rich) repeats and a TIR domain. It plays a fundamental role in pathogen recognition and activation of innate immunity. TLR7 is activated by infections with single-stranded RNA viruses, including influenza virus and vesicular stomatitis virus (VSV). It is predominantly expressed in lung, placenta, and spleen, and lies in close proximity to another family member, TLR8. It acts via MyD88 and TRAF6, leading to NF-kappaB activation, cytokine secretion and the inflammatory response. They recognize pathogen-associated molecular patterns (PAMPs) that are expressed on infectious agents, and mediate the production of cytokines necessary for the development of effective immunity.

Synonyms:

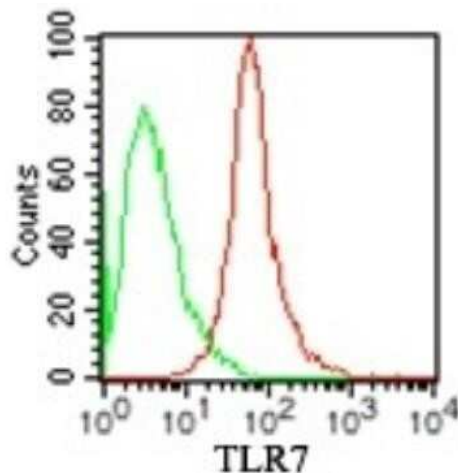
TLR7-like

Protein Families:

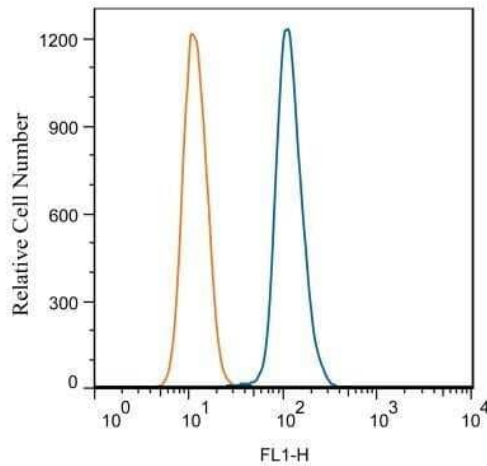
Druggable Genome, Transmembrane

Protein Pathways:

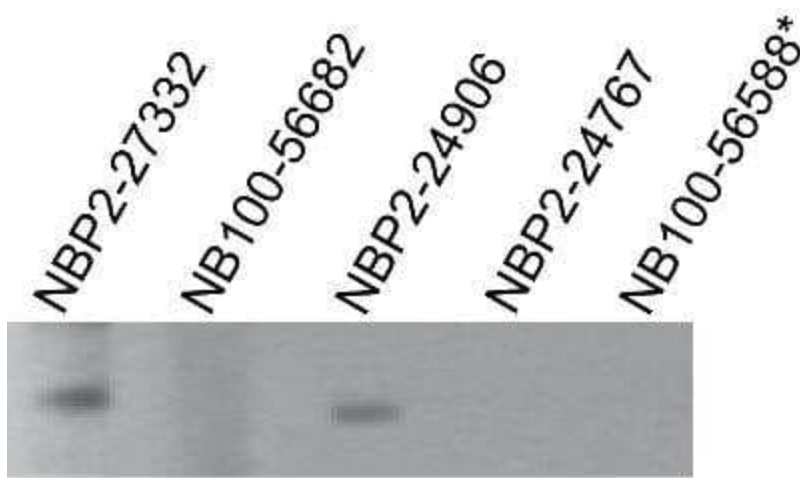
Toll-like receptor signaling pathway

Product images:

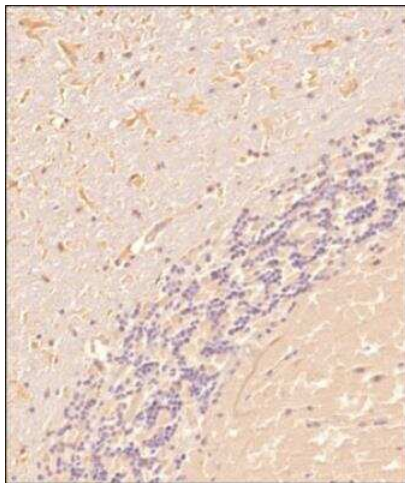
Flow (Intracellular): TLR7 Antibody (4G6) TA337157 - Analysis using the PE conjugate of TA337157. Staining of TLR7 in 10^6 human BDCM cells (red) and 0.5 μ g of mouse IgG1 isotype control (green). this antibody was used for this test.



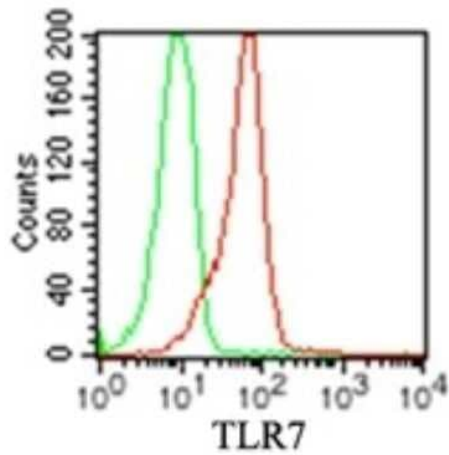
Flow Cytometry: TLR7 Antibody (4G6) TA337157 - Analysis using Azide Free version of TA337157. THP-1 cells were stained with TLR7 (4G) NBP2-25274 (blue) and a matched isotype control (orange). Cells were fixed with 4% PFA and then permeabilized with 0.1% saponin.



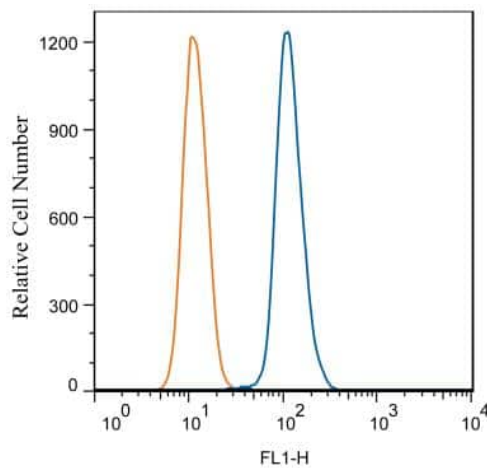
Western Blot: TLR7 Antibody (4G6) TA337157 - TLR7 antibodies tested at 2 ug/ml on recombinant partial hTLR7 protein (amino acids 562-839). NB100-56682 and NBP2-24767 immunogen sequences are not present in recombinant protein; *NB100-56588 is not recommended for use in western blot.



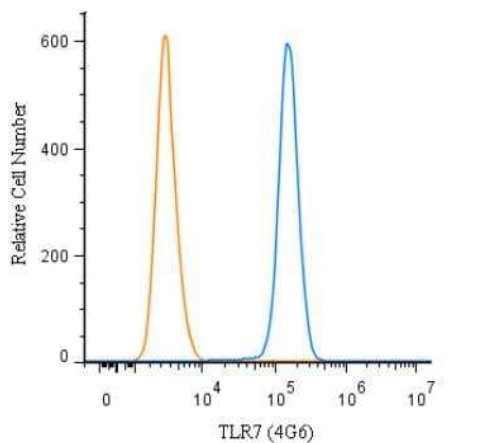
Immunohistochemistry: TLR7 Antibody (4G6) TA337157 - Analysis of a FFPE tissue section of human brain using 1:200 dilution of TLR7 [4G6] antibody. The staining was developed using HRP labeled anti-rabbit secondary antibody and DAB reagent, and nuclei of cells were counter-stained with hematoxylin.



Flow Cytometry: TLR7 Antibody (4G6) TA337157 - Analysis of TLR7 in human monocytes using 2 ug of TLR7 monoclonal antibody (red) and 2 ug of mouse IgG1 isotype control antibody (green). TLR intracellular flow kit was used for this test, and an anti-mouse IgG PE conjugated secondary antibody .

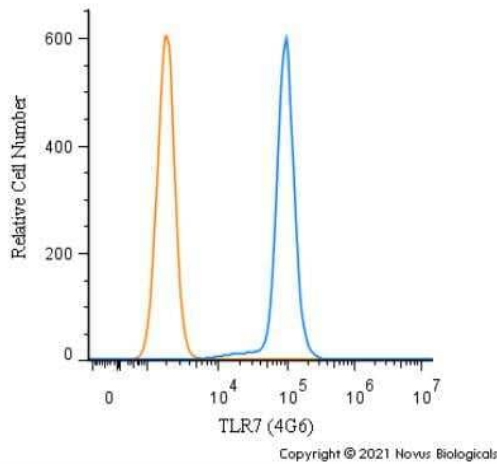


Flow Cytometry: TLR7 Antibody (4G6) TA337157 - THP-1 cells were stained with TLR7 (4G) TA337157 (blue) and a matched isotype control (orange). Cells were fixed with 4% PFA and then permeabilized with 0.1% saponin. Cells were incubated in an antibody dilution of 5 ug/mL for 30 minutes at room temperature, followed by Dylight488-conjugated anti-mouse secondary antibody.

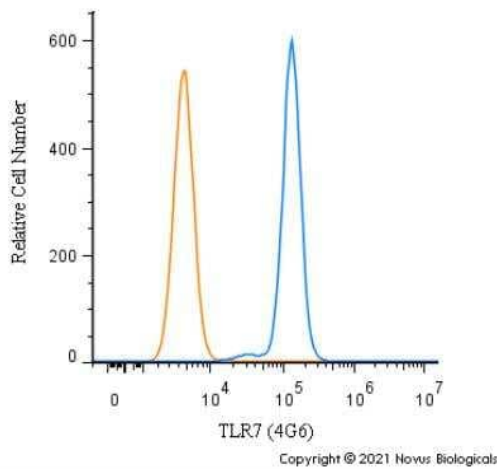


Flow Cytometry: TLR7 Antibody (4G6) TA337157 - An intracellular stain was performed on Raji cells with TLR7 Antibody (4G6) TA337157 (blue) and a matched isotype control (orange). Cells were fixed with 4% PFA and then permeabilized with 0.1% saponin. Cells were incubated in an antibody dilution of 1.0 ug/mL for 30 minutes at room temperature, followed by Mouse IgG (H+L) Cross-Adsorbed Secondary Antibody, Dylight 550 (35503, Thermo Fisher).

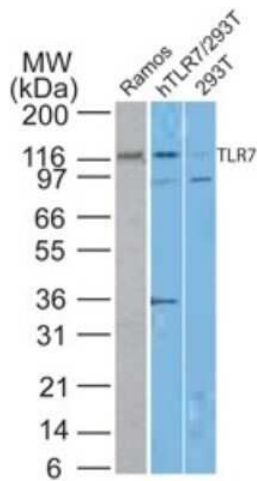
Copyright © 2021 Novus Biologicals



Flow Cytometry: TLR7 Antibody (4G6) TA337157 - An intracellular stain was performed on Ramos cells with TLR7 Antibody (4G6) TA337157 (blue) and a matched isotype control (orange). Cells were fixed with 4% PFA and then permeabilized with 0.1% saponin. Cells were incubated in an antibody dilution of 1.0 ug/mL for 30 minutes at room temperature, followed by Mouse IgG (H+L) Cross-Adsorbed Secondary Antibody, Dylight 550 (35503, Thermo Fisher).



Flow Cytometry: TLR7 Antibody (4G6) TA337157 - An intracellular stain was performed on Daudi cells with TLR7 Antibody (4G6) TA337157 (blue) and a matched isotype control (orange). Cells were fixed with 4% PFA and then permeabilized with 0.1% saponin. Cells were incubated in an antibody dilution of 1.0 ug/mL for 30 minutes at room temperature, followed by Mouse IgG (H+L) Cross-Adsorbed Secondary Antibody, Dylight 550 (35503, Thermo Fisher).



Western Blot: TLR7 Antibody (4G6) TA337157 - Analysis using Azide Free version of TA337157. Human TLR7 antibody in Ramos and transfected 293T lysate using TLR7 monoclonal antibody at 10 ug/ml.