

## Product datasheet for **TA337156**

### **CRLF2 Mouse Monoclonal Antibody [Clone ID: 59N5G4]**

#### **Product data:**

<b>Product Type:</b>	Primary Antibodies
<b>Clone Name:</b>	59N5G4
<b>Applications:</b>	IHC, WB
<b>Recommended Dilution:</b>	Immunohistochemistry, Western Blot: 1:100-1:2000, Immunohistochemistry-Paraffin
<b>Reactivity:</b>	Human
<b>Host:</b>	Mouse
<b>Clonality:</b>	Monoclonal
<b>Immunogen:</b>	Amino acids 119-231 of human TSLPR protein were used as the immunogen for the antibody.
<b>Formulation:</b>	PBS containing 0.05% BSA, 0.05% Sodium Azide. Store at 4C short term. Aliquot and store at -20C long term. Avoid freeze-thaw cycles.
<b>Concentration:</b>	lot specific
<b>Purification:</b>	Protein G purified
<b>Conjugation:</b>	Unconjugated
<b>Storage:</b>	Store at -20°C as received.
<b>Stability:</b>	Stable for 12 months from date of receipt.
<b>Gene Name:</b>	cytokine receptor-like factor 2
<b>Database Link:</b>	<a href="#">NP_071431</a> <a href="#">Entrez Gene 64109 Human</a> <a href="#">Q9HC73</a>

**Background:** TSLPR is a member of the hematopoietin receptor family which acts as a receptor for the cytokine thymic stromal lymphopoietin (TSLP) that promotes CD4(+) T cell homeostasis and contributes to allergic and inflammatory responses. TSLPR is a heterodimeric complex, consisting of the IL-7R-alpha chain and a common gamma-like receptor chain. The protein contains two fibronectin type III-like domains, four conserved cysteine residues, and a WSXWS box-like motif at its N-terminal, while the C-terminal intracellular region contains box 1 and box 2-like motifs. The protein is usually expressed in liver, kidney, heart, and skeletal muscle. The gene for human TSLPR is localized to the pseudoautosomal region, Xp22.3 and Yp11.3.



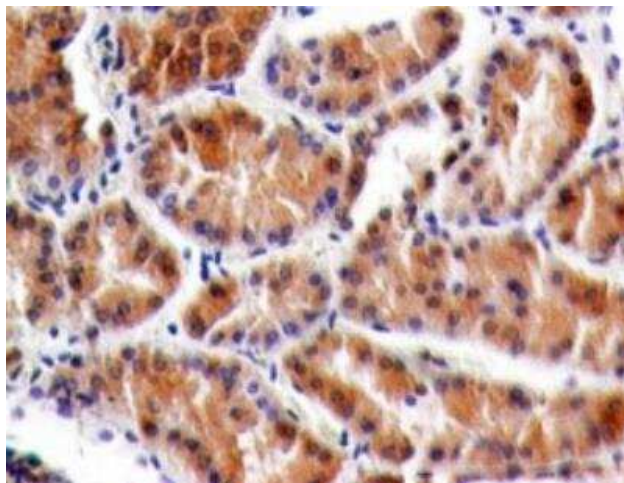
[View online »](#)

**Synonyms:** CRL2; CRLF2Y; TSLPR

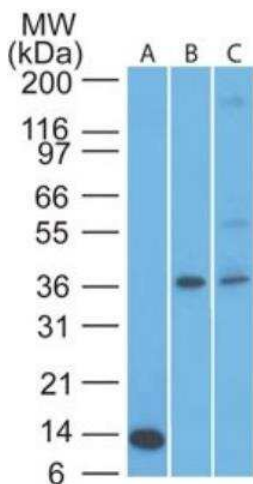
**Protein Families:** Druggable Genome, Secreted Protein, Transmembrane

**Protein Pathways:** Cytokine-cytokine receptor interaction, Jak-STAT signaling pathway

**Product images:**



Immunohistochemistry-Paraffin: TSLP R/CRLF2 Antibody (59N5G4) TA337156 - Formalin-fixed, paraffin-embedded normal human kidney tissue stained with TSLPR antibody (5 ug/ml), peroxidase-conjugate and DAB chromogen.



Western Blot: TSLP R/CRLF2 Antibody (59N5G4) TA337156 - Analysis of CRLF2 in an A) partial recombinant protein (0.1 ug/ml), B) human muscle and C) liver lysate (5 ug/ml) using CRLF2 antibody.