

## Product datasheet for **TA337155**

### IL17F Mouse Monoclonal Antibody [Clone ID: 4H1629.1]

#### Product data:

Product Type:	Primary Antibodies
Clone Name:	4H1629.1
Applications:	IHC, WB
Recommended Dilution:	WB: 0.5-2ug/ml~, IHC: 5 ug/ml, IHC-P: 5 ug/ml
Reactivity:	Human
Host:	Mouse
Isotype:	IgG1
Clonality:	Monoclonal
Immunogen:	Full-length recombinant MRkIPkVGHT FFQkPESCPP VPGGSMkLDI GIINENQRVS MSRNIESRST SPWNYTVTWD PNRYPSEVVQ AQCRNLGCIN AQGKEDISMN SVPIQQETLV VRRkHQGCSV SFQLEkVLVT VGCTCVTPVI HHVQ
Formulation:	BSA free PBS containing 0.05% Sodium Azide
Concentration:	lot specific
Purification:	Protein G purified
Conjugation:	Unconjugated
Storage:	Store at -20°C as received.
Stability:	Stable for 12 months from date of receipt.
Gene Name:	interleukin 17F
Database Link:	<a href="#">NP_443104</a> <a href="#">Entrez Gene 112744 Human</a> <a href="#">Q96PD4</a>



[View online »](#)

**Background:**

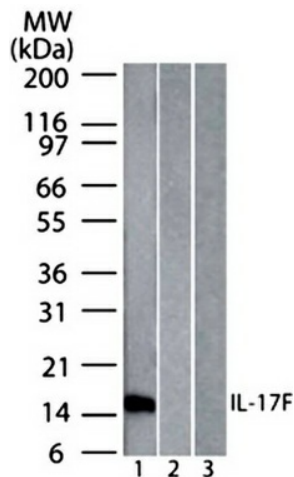
Interleukin 17 (IL-17) is a pro-inflammatory cytokine produced by a subset of T helper cells that develops distinct from the Th1- and Th2- cell differentiation pathways. IL-17, also known as CTLA-8, stimulates induction of other pro-inflammatory cytokines TNF alpha, IL-1 beta, IL-6, and IL-8, and reports strongly suggest the involvement of IL-17 in several chronic inflammatory diseases such as rheumatoid arthritis, psoriasis and multiple sclerosis. TGF-Beta (differentiation) and IL-23 (expansion) are required for induction and maintenance of Th17 (IL-17 producing) cells, which in turn induce the other pro-inflammatory cytokines. IL-17 (~32kDa) protein is produced and exists as a homo-dimer, has homology to a herpes virus early protein, is one of the six members (IL-17A-F) of this cytokine family, and is well characterized and highly expressed by activated effector memory T cells.

**Synonyms:**

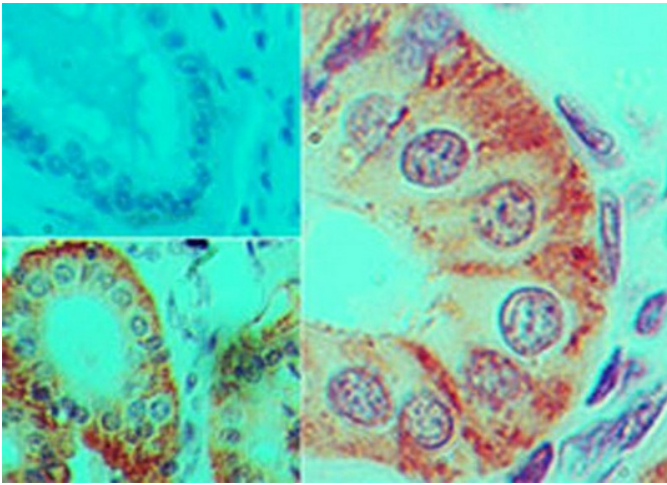
CANDF6; IL-17F; ML-1; ML1

**Protein Families:**

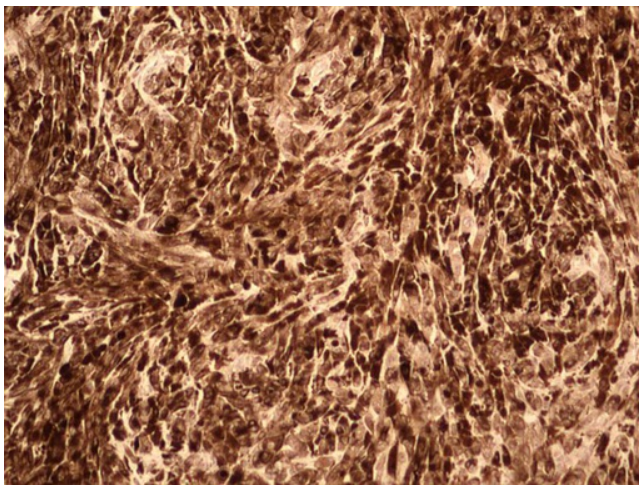
Druggable Genome, Secreted Protein

**Product images:**

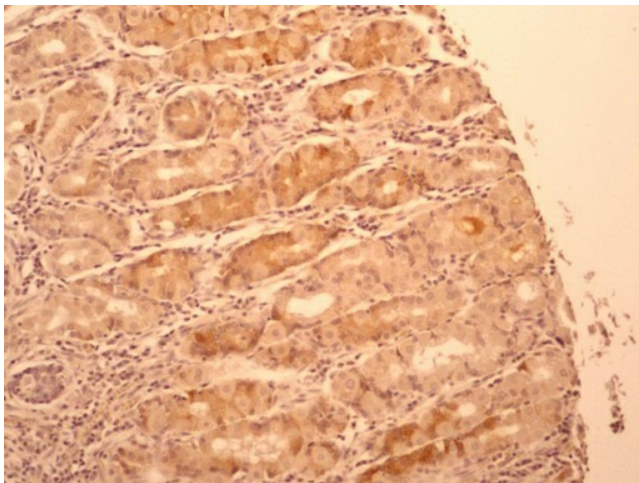
Western Blot: IL17F Antibody (4H1629) TA337155 - WB analysis on full-length recombinant IL-17F proteins of (1) Human, (2) Mouse and (3) Rat using IL17F antibody (clone 4H1629) at a concentration of 0.5 ug/ml. Note: This antibody did not detect the mouse



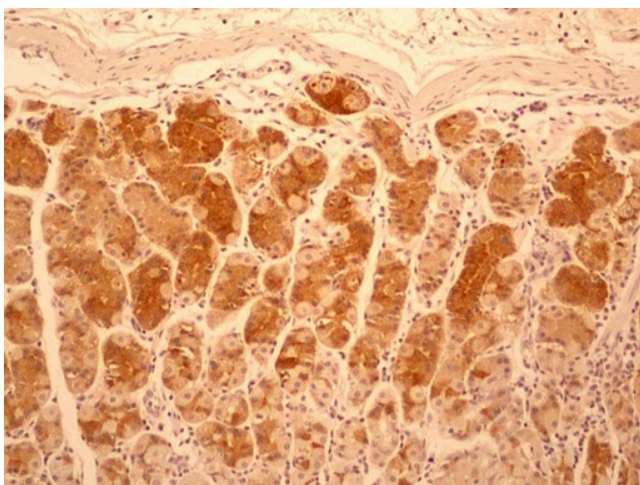
Immunohistochemistry-Paraffin: IL17F Antibody (4H1629) TA337155 - IHC-P analysis of IL-17F in formalin-fixed paraffin-embedded human colon tissue using an isotype control (top left) and IL17F antibody (bottom left and right) at 5 ug/ml concentration.



Immunohistochemistry-Paraffin: IL17F Antibody (4H1629) TA337155 - IHC-P detection IL17F protein in a tissue section of human lymph node cancer using IL17F antibody (clone 4H1629) at a concentration of 5 ug/ml.



Immunohistochemistry-Paraffin: IL17F Antibody (4H1629) TA337155 - IHC-P detection IL17F protein in a tissue section of human stomach cancer using IL17F antibody (clone 4H1629) at a concentration of 5 ug/ml. Diffused cytoplasmic staining was observed in



Immunohistochemistry-Paraffin: IL17F Antibody (4H1629) TA337155 - IHC-P detection IL17F protein in a tissue section of normal human stomach using IL17F antibody (clone 4H1629) at a concentration of 5 ug/ml. Cytoplasmic expression was observed all over t