

Product datasheet for **TA337154**

IL17E (IL25) Mouse Monoclonal Antibody [Clone ID: 8B1]

Product data:

Product Type:	Primary Antibodies
Clone Name:	8B1
Applications:	FC, WB
Recommended Dilution:	Western Blot: 0.5-2ug/ml, Flow Cytometry: 1-2ug/ml
Reactivity:	Human
Host:	Mouse
Isotype:	IgG1, kappa
Clonality:	Monoclonal
Immunogen:	Full-length human IL17E recombinant protein was used as the immunogen for this antibody.
Formulation:	PBS containing 0.05% BSA, 0.05% Sodium Azide. Store at 4C short term. Aliquot and store at -20C long term. Avoid freeze-thaw cycles.
Concentration:	lot specific
Purification:	Protein G purified
Conjugation:	Unconjugated
Storage:	Store at -20°C as received.
Stability:	Stable for 12 months from date of receipt.
Gene Name:	interleukin 25
Database Link:	NP_758525 Entrez Gene 64806 Human Q9H293

Background: As a member of the IL-17 family, IL-25 has been identified as a pro-inflammatory cytokine which is produced by Th17 effector cells thus enabling the TH17 subset to initiate or maintain the autoimmune process in diseases such as Rheumatoid Arthritis (1-3). IL-25 appears to stimulate IL-8 production and itself appears to be activated through IL-23, IL-6, and TGF-Beta (1). Studies of IL-25 expression and activation through NF-kB taken together with IL-17 production and Th17 polarization through TLR ligand activation further closely tie the IL-17 and Th17 family together with the TLR signaling network initiating and controlling immune responses (4-7).



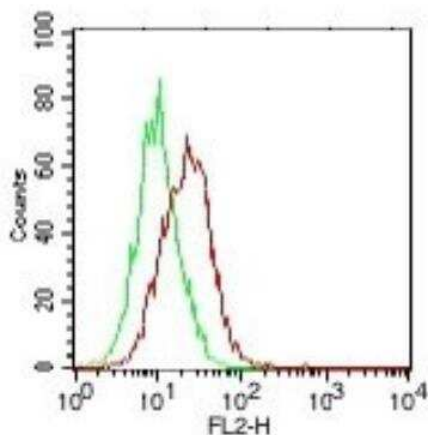
[View online »](#)

Synonyms: IL17E

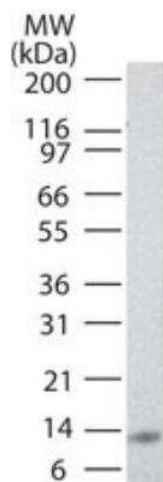
Protein Families: Druggable Genome, Secreted Protein, Transmembrane

Protein Pathways: Cytokine-cytokine receptor interaction

Product images:



Flow Cytometry: IL-17E/IL-25 Antibody (8B1) TA337154 - Intracellular analysis of IL-17E in PC3 cells using 1 ug of IL-17E antibody (green histogram represents isotype control antibody this antibody, red represents IL-17E antibody. this antibody was used for this test, and an anti-mouse IgG PE conjugated secondary antibody this antibody).



Western Blot: IL-17E/IL-25 Antibody (8B1) TA337154 - Analysis of IL17E in full-length recombinant protein using IL17E antibody at 0.5 ug/ml.