

## Product datasheet for **TA337152**

### WNT5A Mouse Monoclonal Antibody [Clone ID: 4M5E4]

#### Product data:

Product Type:	Primary Antibodies
Clone Name:	4M5E4
Applications:	IHC
Recommended Dilution:	IHC-P: 5-10ug/ml
Reactivity:	Human
Host:	Mouse
Isotype:	IgG2a, kappa
Clonality:	Monoclonal
Immunogen:	A portion of the human Wnt5A protein was used as the immunogen for this antibody.
Formulation:	PBS containing 0.05% BSA, 0.05% Sodium Azide. Store at 4C short term. Aliquot and store at -20C long term. Avoid freeze-thaw cycles.
Concentration:	lot specific
Purification:	Protein G purified
Conjugation:	Unconjugated
Storage:	Store at -20°C as received.
Stability:	Stable for 12 months from date of receipt.
Gene Name:	Wnt family member 5A
Database Link:	<a href="#">NP_003383</a> <a href="#">Entrez Gene 7474 Human P41221</a>
Background:	Wnt5A is a secreted protein found in the extracellular region that belongs to the Wnt family. It is a proto-oncogene that functions in modulating cell fate and behavior during vertebrate development and has an important role in Wnt signaling pathway. It is a glycoprotein that plays an important role in cell communication and development. Wnt5A acts as a ligand for members of the frizzled family of seven transmembrane receptors. It is suspected that Wnt5A is a developmental protein. Wnt5A is a signaling molecule which affects the development of discrete regions of tissues and is likely to signal over only few cell diameters.
Synonyms:	hWNT5A

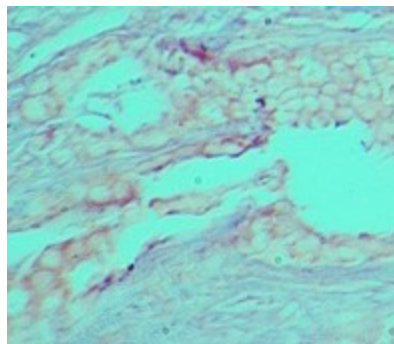


[View online »](#)

**Protein Families:** Adult stem cells, Cancer stem cells, Druggable Genome, ES Cell Differentiation/IPS, Secreted Protein, Stem cell relevant signaling - Wnt Signaling pathway

**Protein Pathways:** Basal cell carcinoma, Hedgehog signaling pathway, Melanogenesis, Pathways in cancer, Wnt signaling pathway

**Product images:**



Immunohistochemistry-Paraffin: Wnt5a Antibody (4M5E4) TA337152 - Staining of human breast tumor tissue probed with Wnt5A antibody at 5 ug/ml.