

Product datasheet for **TA337151**

NLRX1 Rabbit Polyclonal Antibody

Product data:

Product Type:	Primary Antibodies
Applications:	IHC, WB
Recommended Dilution:	Immunohistochemistry, Western Blot: 5-7ug/ml~, Immunohistochemistry-Paraffin: 5-10ug/ml
Reactivity:	Human, Mouse, Rat, Equine, Primate
Host:	Rabbit
Clonality:	Polyclonal
Immunogen:	A portion of amino acid 580-630 of human NLRX1 was used as the immunogen for the antibody.
Formulation:	PBS containing 0.05% BSA, 0.05% Sodium Azide. Store at 4C short term. Aliquot and store at -20C long term. Avoid freeze-thaw cycles.
Concentration:	lot specific
Purification:	Protein A purified
Conjugation:	Unconjugated
Storage:	Store at -20°C as received.
Stability:	Stable for 12 months from date of receipt.
Gene Name:	NLR family member X1
Database Link:	NP_078894 Entrez Gene 270151 Mouse Entrez Gene 315599 Rat Entrez Gene 79671 Human Q86UT6
Background:	NLR family member X1 (NLRX1) belongs to the NLRP family and contains four LRR (leucine-rich) repeats and one NATCH domain. NLRX1 localizes to the mitochondrial outer membrane and interacts through the mitochondrial antiviral signalling adaptor MAVS during viral infection. Expression of NLRX1 results in the potent inhibition of RLH- and MAVS-mediated interferon-beta promoter activity and in the disruption of virus-induced RLH-MAVS interactions. It is also reported that NLRX1 synergistically potentiated ROS production induced by tumour necrosis factor alpha, Shigella infection and double-stranded RNA, resulting in amplified NF-kappaB-dependent and JUN amino-terminal kinases-dependent signalling, thus contributing to the link between ROS generation at the mitochondria and innate immune responses.

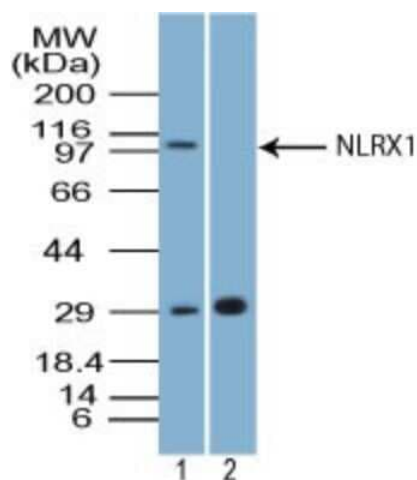


[View online »](#)

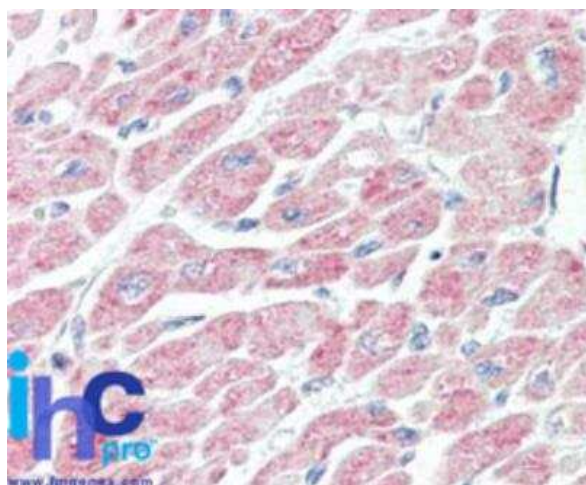
Synonyms: CLR11.3; DLNB26; NOD5; NOD9; NOD26

Protein Pathways: RIG-I-like receptor signaling pathway

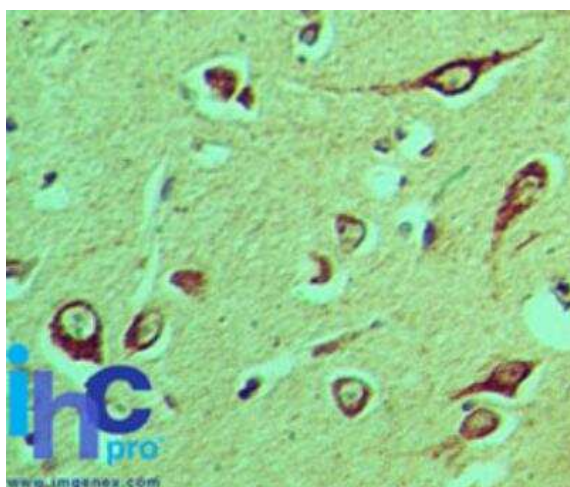
Product images:



Western Blot: NLRX1 Antibody TA337151 - Analysis of NLRX1 in mouse heart tissue lysate in the 1) absence and 2) presence of immunizing peptide using this antibody. Goat anti-rabbit Ig HRP secondary antibody and PicoTect ECL substrate solution were used for this test.



Immunohistochemistry-Paraffin: NLRX1 Antibody TA337151 - Human heart stained with NLRX1 antibody at 10 ug/ml.



Immunohistochemistry-Paraffin: NLRX1 Antibody TA337151 - Human brain stained with NLRX1 antibody at 5 ug/ml. Staining of formalin-fixed tissues is enhanced by boiling tissue sections in 10 mM sodium citrate buffer, pH 6.0 for 10-20 min followed by cooling at RT for 20 min.