

Product datasheet for **TA337150**

SNAIL (SNAI1) Rabbit Polyclonal Antibody

Product data:

Product Type:	Primary Antibodies
Applications:	ICC/IF, WB
Recommended Dilution:	Immunocytochemistry/ Immunofluorescence: 1:100, Western Blot: 3-5ug/ml, Knockout Validated
Reactivity:	Human, Mouse, Canine, Equine
Host:	Rabbit
Clonality:	Polyclonal
Immunogen:	A portion of amino acids 80-130 of human SNAI1 was used as the immunogen
Formulation:	PBS containing 0.05% BSA, 0.05% Sodium Azide. Store at 4C short term. Aliquot and store at -20C long term. Avoid freeze-thaw cycles.
Concentration:	lot specific
Purification:	Protein A purified
Conjugation:	Unconjugated
Storage:	Store at -20°C as received.
Stability:	Stable for 12 months from date of receipt.
Gene Name:	snail family transcriptional repressor 1
Database Link:	NP_005976 Entrez Gene 20613 Mouse Entrez Gene 6615 Human O95863

Background: Zinc finger protein SNAI1 is a zinc finger transcriptional repressor which down regulates the expression of ectodermal gene within the mesoderm and thus functions to form the mesoderm and neural crest. It is reported that SNAI1 acts as an important factor of tumor invasion as evidenced by its role in E-cadherin down-regulation and induction of epithelial-mesenchymal transition (EMT). In human breast cancer, the expression of SNAI1 and/or the homologous SNAI2 (Slug) has been associated with E-cadherin repression, local or distant metastasis, tumor recurrence, or poor prognosis in different tumor series. It is also reported that Snail 1 protein in the stroma is a new putative prognosis marker for colon tumors. In recent studies SNAI1 was found to be potential target for Proteasome degradation by hypoxia-controlled FBXL14 ubiquitin ligase targets.



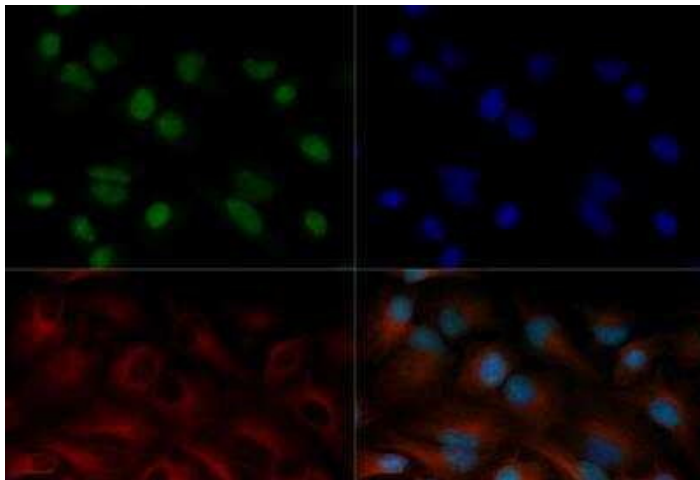
[View online »](#)

Synonyms: dj710H13.1; SLUGH2; SNA; SNAH; SNAIL; SNAIL1

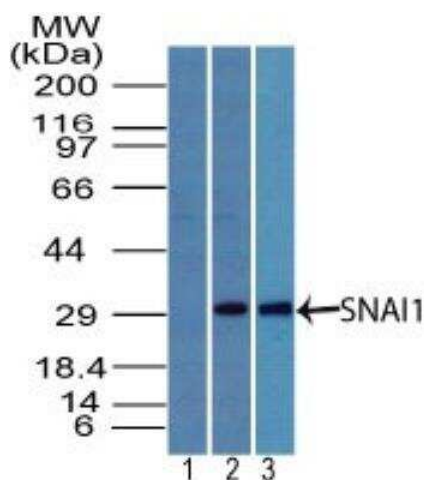
Protein Families: Druggable Genome

Protein Pathways: Adherens junction

Product images:



Immunocytochemistry/Immunofluorescence: Snail Antibody TA337150 - HeLa cells were fixed for 10 minutes using 10% formalin and then permeabilized for 5 minutes using 1X TBS + 0.5% Triton X-100. The cells were incubated with SNAIL (TA337150) at a 1:100 dilution overnight at 4 degrees Celsius and detected with DyLight 488 (Green) at a 1:500 dilution. Alpha tubulin was used as a co-stain at a 1:1000 dilution and detected with DyLight 550 (Red). Nuclei were detected with DAPI (Blue) at 2.0 ug/ml in 1X PBS. Cells were imaged using a 40X objective.



Western Blot: Snail Antibody TA337150 - Analysis of Snail in human MCF7 cell lysate using (1) prebleed at 1:5000 dilution and (2) this antibody. Goat anti-rabbit Ig HRP secondary antibody and PicoTect ECL substrate solution were used for this test.