

Product datasheet for **TA337146**

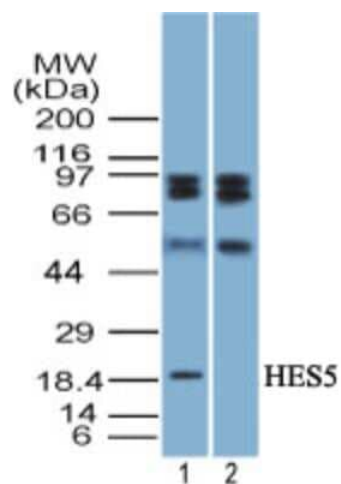
HES5 Rabbit Polyclonal Antibody

Product data:

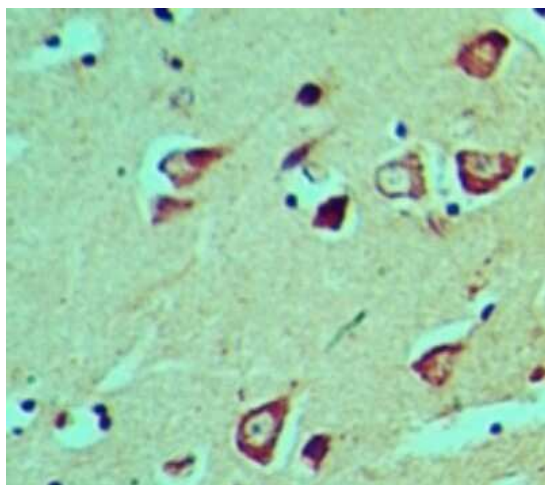
Product Type:	Primary Antibodies
Applications:	IHC, WB
Recommended Dilution:	Immunohistochemistry, Western Blot: 6-9ug/ml~, Immunohistochemistry-Paraffin: 5ug/ml
Reactivity:	Human
Host:	Rabbit
Clonality:	Polyclonal
Immunogen:	A portion of amino acid1-50 of human HES5 was used as the immunogen for this antibody.
Formulation:	PBS containing 0.05% BSA, 0.05% Sodium Azide. Store at 4C short term. Aliquot and store at -20C long term. Avoid freeze-thaw cycles.
Concentration:	lot specific
Purification:	Protein A purified
Conjugation:	Unconjugated
Storage:	Store at -20°C as received.
Stability:	Stable for 12 months from date of receipt.
Gene Name:	hes family bHLH transcription factor 5
Database Link:	NP_001010926 Entrez Gene 388585 Human Q5TA89
Background:	Hairy and Enhancer-of-split homologues 5 (HES5) is a helix-loop-helix transcriptional factor that negatively regulates cell differentiation during embryogenesis. It contains one basic helix-loop-helix (bHLH) domain and one Orange domain. HES5 is reported to be a down stream effector of the Notch Signaling Pathway and is expressed in advanced ovarian serous adenocarcinomas as well as in cervical squamous carcinoma. Reports also suggest that HES5 is abundantly expressed in osteoarthritis along with Notch1 and Jagged1.
Synonyms:	bHLHb38
Protein Families:	Druggable Genome, ES Cell Differentiation/IPS
Protein Pathways:	Notch signaling pathway



[View online »](#)

Product images:

Western Blot: HES5 Antibody TA337146 - analysis of HES5 in mouse liver tissue lysate in the 1) absence and 2) presence of immunizing peptide using HES5 antibody at 7 ug/ml. goat anti-rabbit Ig HRP secondary antibody and PicoTect ECL substrate solution were used for this test.



Immunohistochemistry-Paraffin: HES5 Antibody TA337146 - analysis of HES5 in formalin-fixed, paraffin-embedded human brain tissue using HES5 antibody at 5 ug/ml.