

## Product datasheet for **TA337145**

### GFI1 Rabbit Polyclonal Antibody

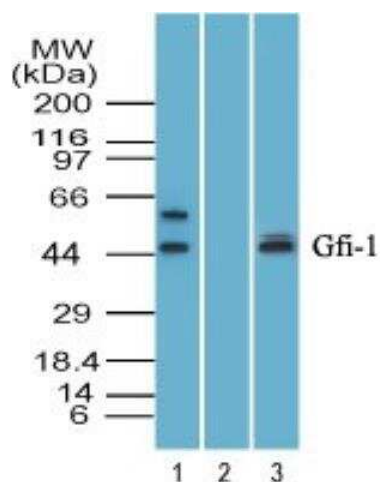
#### Product data:

Product Type:	Primary Antibodies
Applications:	IHC, WB
Recommended Dilution:	Immunohistochemistry, Western Blot: 6-8ug/ml~, Immunohistochemistry-Paraffin: 5ug/ml
Reactivity:	Human, Mouse, Rat, Bovine, Chicken
Host:	Rabbit
Clonality:	Polyclonal
Immunogen:	A portion of amino acid 280-330 of human Zinc finger protein Gfi-1 was used as the immunogen.
Formulation:	PBS containing 0.05% BSA, 0.05% Sodium Azide. Store at 4C short term. Aliquot and store at -20C long term. Avoid freeze-thaw cycles.
Concentration:	lot specific
Purification:	Protein A purified
Conjugation:	Unconjugated
Storage:	Store at -20°C as received.
Stability:	Stable for 12 months from date of receipt.
Gene Name:	growth factor independent 1 transcriptional repressor
Database Link:	<a href="#">NP_005254</a> <a href="#">Entrez Gene 14581 Mouse</a> <a href="#">Entrez Gene 24388 Rat</a> <a href="#">Entrez Gene 2672 Human</a> <a href="#">Q99684</a>
Background:	Gfi-1 is a nuclear zinc finger (ZF) transcriptional repressor that plays an important role in hematopoiesis and inner ear development, and has been implicated in lymphomagenesis. The Gfi1 protein expression is regulated by the ubiquitin-proteasome system. It is reported that ubiquitin ligase Triad1 interacts with the DNA-binding domain of Gfi-1. Gfi-1 represses transcription by directly binding to the consensus DNA sequence in the promoters of its target genes. Deficiency of Gfi-1 causes neutropenia and an accumulation of granulomonocytic precursor cells that is reminiscent of a myelodysplastic syndrome in mice.
Synonyms:	GFI-1; GFI1A; SCN2; ZNF163
Protein Families:	Druggable Genome, Transcription Factors



[View online »](#)

## Product images:



Western Blot: GFI-1 Antibody TA337145 - Analysis of Zinc finger protein Gfi-1 in human HepG2 cell lysate in the 1) absence and 2) presence of immunizing peptide, and 3) mouse RAW cell lysate using this antibody. goat anti-rabbit Ig HRP secondary antibody and PicoTect ECL substrate solution were used for this test.



Immunohistochemistry-Paraffin: GFI-1 Antibody TA337145 - Analysis of Gfi-1 in formalin-fixed, paraffin-embedded human brain tissue using this antibody at 5 ug/ml.