

Product datasheet for **TA337143**

TLR2 Rat Monoclonal Antibody [Clone ID: 11G5]

Product data:

Product Type:	Primary Antibodies
Clone Name:	11G5
Applications:	CyTOF-ready, FC, WB
Recommended Dilution:	Western Blot: 4-6ug/ml~, Flow Cytometry: 2.5ug/10 ⁶ cells, CyTOF-ready
Reactivity:	Mouse
Host:	Rat
Isotype:	IgG2a, kappa
Clonality:	Monoclonal
Immunogen:	A portion of amino acids 400-450 of murine TLR2 was used as the immunogen for this antibody.
Formulation:	PBS containing 0.05% BSA, 0.05% Sodium Azide. Store at 4C short term. Aliquot and store at -20C long term. Avoid freeze-thaw cycles.
Concentration:	lot specific
Purification:	Protein G purified
Conjugation:	Unconjugated
Storage:	Store at -20°C as received.
Stability:	Stable for 12 months from date of receipt.
Gene Name:	toll like receptor 2
Database Link:	NP_003255 Entrez Gene 24088 Mouse O60603



[View online »](#)

Background:

The Toll-like receptors (TLRs) in mammals comprise a family of transmembrane proteins characterized by multiple copies of leucine rich repeats in the extracellular domain and an IL-1 receptor motif in the cytoplasmic domain. Like its counterparts in *Drosophila*, TLRs signal through adaptor molecules (1). The TLR family is a phylogenetically conserved mediator of innate immunity that is essential for microbial recognition (2). Ten human homologs of TLRs (TLR1-10) have been described (3). TLR2 is differentially expressed in human cells. TLR2 is expressed in tonsils, lymph nodes, and appendices, activated B-cells in germinal centers. CD14+ monocytes expressed the highest level of TLR2 followed by CD15+ granulocytes, and CD19+ B-cells, CD3+ T-cells, and CD56+ Nk cells did not express TLR2. The expression of TLR2 in different cell types is regulated by different immune response modifiers. For example, LPS, GM-CSF, IL-1, and IL-10 up regulates TLR2 whereas IL-4, IFN-gamma, and TNF down regulate TLR2 expression in monocytes (4).

Synonyms:

CD282; TIL4

Note:

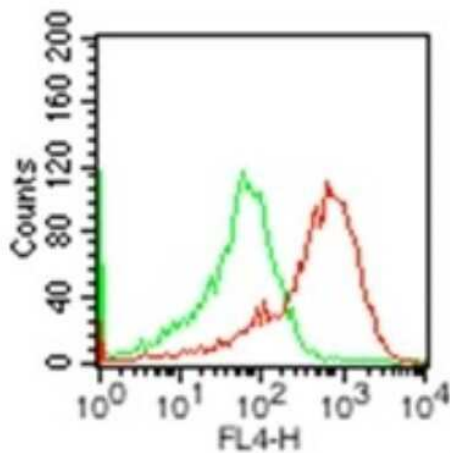
This monoclonal antibody only very weakly detects human TLR2 in Ramos cell lysate and is not recommended for human sample testing.

Protein Families:

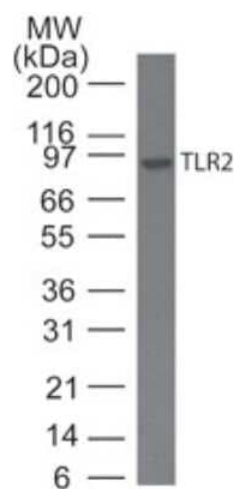
Druggable Genome, Transmembrane

Protein Pathways:

Toll-like receptor signaling pathway

Product images:

Flow Cytometry: TLR2 Antibody (11G5) TA337143
- Cell surface analysis using TLR2 antibody.
Thyoglycollate-elicited peritoneal macrophages from C57BL/6 mice were tested with 2.5 ug of isotype control antibody (green) and 2.5 ug of TLR2 antibody (red).



Western Blot: TLR2 Antibody (11G5) TA337143 - Analysis of TLR2 antibody. Mouse RAW cell lysate was probed using TLR2 antibody at 5 ug/ml. goat anti-rat Ig HRP secondary antibody and PicoTect ECL substrate solution were used for this test.