

Product datasheet for **TA337142**

DECTIN 2 (CLEC6A) Mouse Monoclonal Antibody [Clone ID: 3D1]

Product data:

Product Type:	Primary Antibodies
Clone Name:	3D1
Applications:	CyTOF-ready, FC, IHC, WB
Recommended Dilution:	Immunohistochemistry-Paraffin: 1:200, Immunohistochemistry: 1:200, Flow (Cell Surface), CyTOF-ready, Western Blot: 2 - 5ug/mL, Flow Cytometry: 0.5 ug/5x10 ⁵ cells
Reactivity:	Human
Host:	Mouse
Isotype:	IgG3, kappa
Clonality:	Monoclonal
Immunogen:	A portion of amino acids 75-139 of human Dectin-2 was used as the immunogen for the antibody. 90-106
Formulation:	PBS containing 0.05% BSA, 0.05% Sodium Azide. Store at 4C short term. Aliquot and store at -20C long term. Avoid freeze-thaw cycles.
Concentration:	lot specific
Purification:	Protein G purified
Conjugation:	Unconjugated
Storage:	Store at -20°C as received.
Stability:	Stable for 12 months from date of receipt.
Gene Name:	C-type lectin domain family 6 member A
Database Link:	NP_001007034 Entrez Gene 93978 Human Q6EIG7



[View online »](#)

Background:

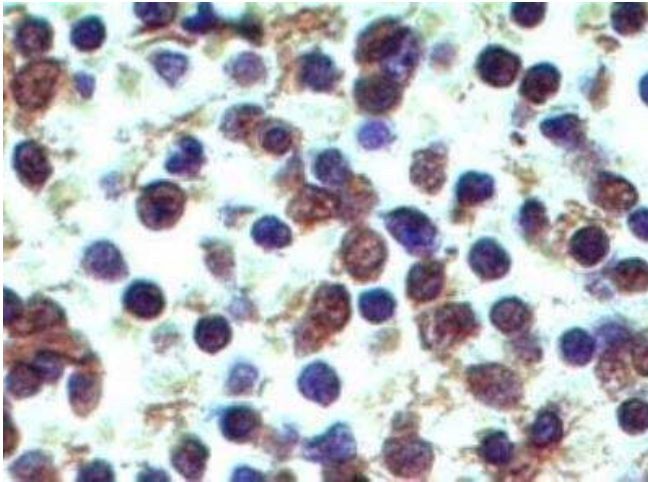
Dectin-2 is a C-type lectin expressed by dendritic cells, macrophages and inflammatory monocytes. It is a type II membrane receptor, with a short cytoplasmic tail, and a C-terminal C-type lectin domain. Dectin-2 is a receptor with specificity for high mannose structures and mediates cytokine production from DC and other antigen presenting cells. Though, Dectin-2 has no obvious signaling motifs attached to CP tail, reports indicate that Dectin-2 employs FcR 7; for internalization and to activate NF- κ B pathway for cytokine production. Though it shares only 20-25% of homology with Dectin-1, it functions similarly as pattern recognition receptor (PRR) for fungal infections, to activate both innate (Syk-CARD9 innate signaling pathway) and adaptive immune responses (by activation of DC) to fungal infections. Thus Dectin-2 is a connector molecule of both innate and adaptive immunity functioning at DC level.

Synonyms:

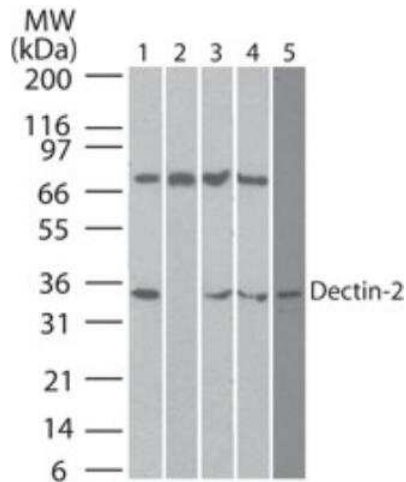
CLEC4N; CLECSF10

Protein Families:

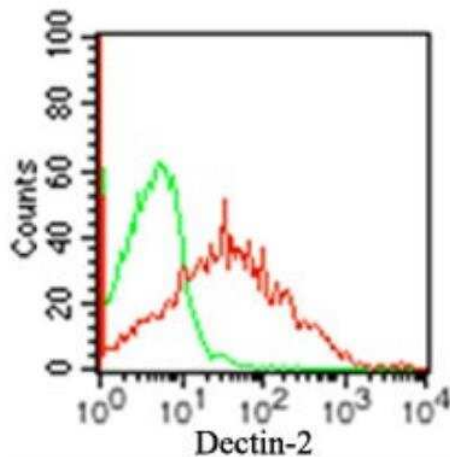
Transmembrane

Product images:

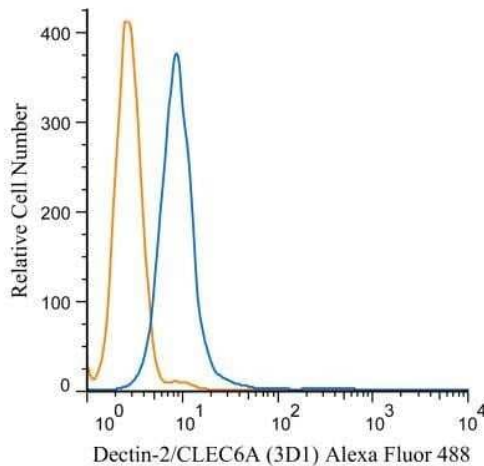
Immunohistochemistry-Paraffin: Dectin-2/CLEC6A Antibody (3D1) TA337142 - Normal human spleen tissue stained with Dectin-2 antibody (5 μ g/mL), peroxidase-conjugate and DAB chromogen. Human tissue TMA was used for this test.



Western Blot: Dectin-2/CLEC6A Antibody (3D1) TA337142 - Analysis of Dectin-2 in human heart lysate in the 1) absence and 2) presence of immunizing peptide, 3) mouse heart lysate, 4) rat heart lysate and 5) human Ramos cell lysate using Dectin-2 antibody at 2 ug/mL. Goat anti-mouse Ig HRP secondary antibody and PicoTect ECL substrate solution were used for this test.



Flow Cytometry: Dectin-2/CLEC6A Antibody (3D1) TA337142 - Surface staining of Dectin-2 on 5×10^5 human PBMCs using 0.5 ug of Dectin-2 antibody (red) and 0.5 ug of isotype control antibody (green).



Flow Cytometry: Dectin-2/CLEC6A Antibody (3D1) TA337142 - An intracellular stain was performed on THP-1 cells with Dectin-2/CLEC6A (3D1) antibody TA337142AF488 (blue) and a matched isotype control (orange). Cells were fixed with 4% PFA and then permeabilized with 0.1% saponin. Cells were incubated in an antibody dilution of 5 ug/mL for 30 minutes at room temperature. Both antibodies were conjugated to Alexa Fluor 488.