

Product datasheet for **TA337133**

14-3-3 sigma (SFN) Rabbit Polyclonal Antibody

Product data:

Product Type:	Primary Antibodies
Applications:	IHC, WB
Recommended Dilution:	Immunohistochemistry, Knockdown Validated, Western Blot: 3-5ug/ml~, Immunohistochemistry-Paraffin: 5-10ug/ml
Reactivity:	Human, Amphibian, Bovine, Canine, Equine, Opossum
Host:	Rabbit
Clonality:	Polyclonal
Immunogen:	A portion of amino acids 120-170 of human 14-3-3 sigma was used as the immunogen for this antibody.
Formulation:	PBS containing 0.05% BSA, 0.05% Sodium Azide. Store at 4C short term. Aliquot and store at -20C long term. Avoid freeze-thaw cycles.
Concentration:	lot specific
Purification:	Protein A purified
Conjugation:	Unconjugated
Storage:	Store at -20°C as received.
Stability:	Stable for 12 months from date of receipt.
Gene Name:	stratifin
Database Link:	NP_006133 Entrez Gene 2810 Human P31947



[View online »](#)

Background:

14-3-3 sigma (stratiffin, SFN, epithelial cell marker protein 1) is a member of a highly conserved family of 14-3-3 proteins that are present in all eukaryotic organisms. There are 7 known mammalian 14-3-3 isoforms (sigma epsilon, beta, zeta, gamma, theta, tau and they play important roles in many biological activities by binding to and altering the subcellular localization and/or stability of key molecules in various signaling cascades. 14-3-3 sigma was originally characterized as a human mammary epithelium marker and later rediscovered as an important molecule for cell cycle checkpoint regulation. Recently it has been reported that 14-3-3 sigma may serve as a prognosis marker predicting survival of pancreatic cancer patient treatment. 14-3-3 sigma is the only 14-3-3 isoform induced by the tumor suppressor protein p53, in response to irradiation and other DNA-damaging agents. 14-3-3 sigma is a p53-regulated inhibitor of G2/M progression and acts as a tumor suppressor gene that is inactivated by methylation of its 5' CpG islands in epithelial tumor cells. Two isoforms of human 14-3-3 sigma are produced by alternative splicing.

Synonyms:

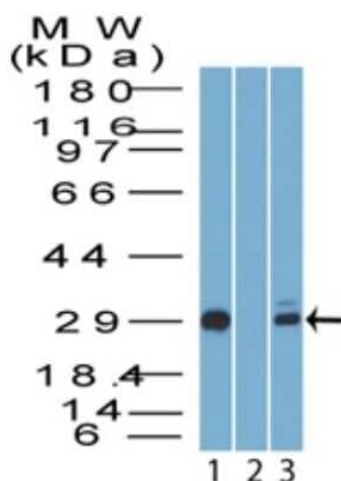
YWHAS

Protein Families:

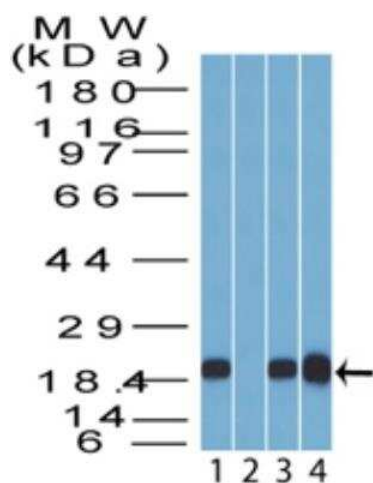
Druggable Genome, Secreted Protein

Protein Pathways:

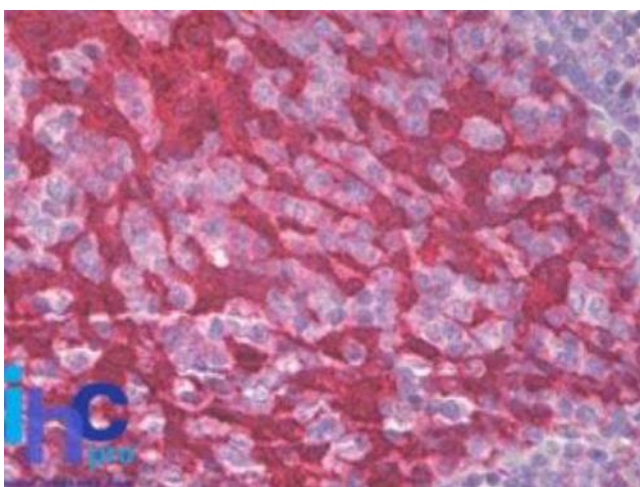
Cell cycle, p53 signaling pathway

Product images:


Western Blot: 14-3-3 sigma/Stratiffin Antibody TA337133 - analysis of 14-3-3 sigma (248 amino acid isoform) using 14-3-3 sigma polyclonal antibody. Human A431 cell lysate in the 1) absence and 2) presence of immunizing peptide, and 3) HeLa cell lysate probed with 14-3-3 sigma antibody at 3 ug/ml.



Western Blot: 14-3-3 sigma/Stratifin Antibody TA337133 - Analysis of 14-3-3 sigma (169 amino acid isoform) using 14-3-3 sigma antibody. Human brain tissue in the 1) absence and 2) presence of immunizing peptide, 3) mouse brain and 4) rat brain tissue probed with 14-3-3 sigma antibody at 3 ug/ml.



Immunohistochemistry-Paraffin: 14-3-3 sigma/Stratifin Antibody TA337133 - Formalin-fixed, paraffin-embedded human tonsil (squamous epithelium) probed with 14-3-3 sigma antibody at 10 ug/ml.