

Product datasheet for **TA337131**

Ifi202b Rabbit Polyclonal Antibody

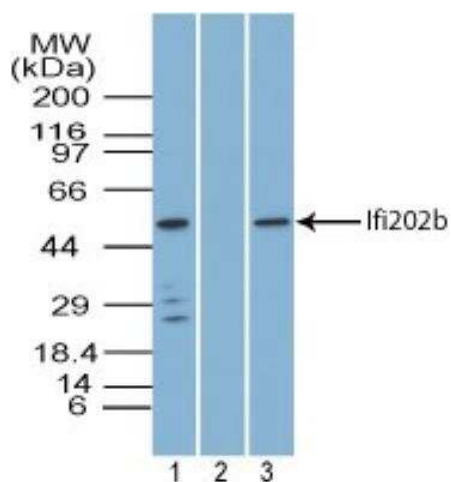
Product data:

Product Type:	Primary Antibodies
Applications:	WB
Recommended Dilution:	Western Blot: 1:100-1:2000
Reactivity:	Mouse
Host:	Rabbit
Clonality:	Polyclonal
Immunogen:	A synthetic peptide corresponding to amino acids 273-290 of the mouse Ifi202b protein.
Formulation:	PBS containing 0.05% BSA, 0.05% Sodium Azide. Store at 4C short term. Aliquot and store at -20C long term. Avoid freeze-thaw cycles.
Concentration:	lot specific
Purification:	Protein A purified
Conjugation:	Unconjugated
Storage:	Store at -20°C as received.
Stability:	Stable for 12 months from date of receipt.
Gene Name:	interferon activated gene 202B
Database Link:	NP_032353 Entrez Gene 26388 Mouse Q9R002
Background:	Interferon-activable protein 202 (Ifi202b, p202) belongs to the HIN-200 family and contains two HIN-200 domains. It is reported to inhibit transcriptional activity of several transcription factors, including NF-kappaB p50 and p65, FOS, JUN, E2F1, E2F4, MYOD1 and myogenin. It has anti-apoptotic effects due to inhibition of the transcriptional activity of p53. It is an interferon-inducible protein which is responsible for Lupus susceptibility and is induced by Interleukin-6.
Synonyms:	lfbip-1; Ifi202; Ifi202a; p202



[View online »](#)

Product images:



Western Blot: IFI202b Antibody TA337131 - Analysis of Ifi202b in mouse spleen tissue lysate in the 1) absence and 2) presence of immunizing peptide, and 3) NIH 3T3 cell lysate using this antibody. Goat anti-rabbit Ig HRP secondary antibody and PicoTect ECL substrate solution were used for this test.