

Product datasheet for **TA337129**

EIF2A Mouse Monoclonal Antibody [Clone ID: 3A7B11]

Product data:

Product Type:	Primary Antibodies
Clone Name:	3A7B11
Applications:	FC, ICC/IF, IHC, WB
Recommended Dilution:	Immunocytochemistry/ Immunofluorescence, Western Blot: 1:500 - 1:2000, Flow Cytometry: 1:200 - 1:400, Immunohistochemistry: 1:50 - 1:200, Immunohistochemistry-Paraffin: 1:200
Reactivity:	Human
Host:	Mouse
Isotype:	IgG1
Clonality:	Monoclonal
Immunogen:	Partial recombinant human EIF2A (between residues 350-585) expressed in E. coli [Uniprot Q9BY44]
Formulation:	PBS, 0.03% Sodium Azide. Store at 4C short term. Aliquot and store at -20C long term. Avoid freeze-thaw cycles.
Concentration:	lot specific
Purification:	Ammonium sulfate precipitation
Conjugation:	Unconjugated
Storage:	Store at -20°C as received.
Stability:	Stable for 12 months from date of receipt.
Gene Name:	eukaryotic translation initiation factor 2A
Database Link:	NP_114414 Entrez Gene 83939 Human Q9BY44



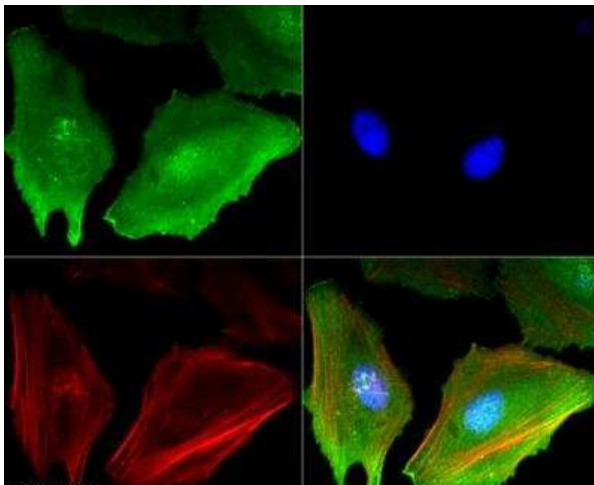
[View online »](#)

Background:

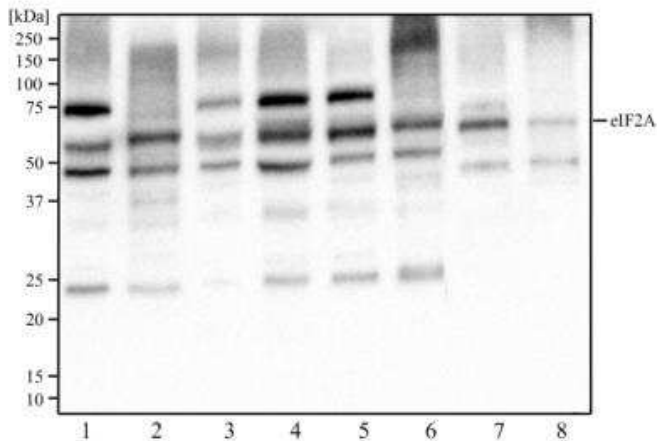
eIF-2 alpha (also known as eukaryotic translation initiation factor 2, subunit 1 alpha) is a 35 kD member of the eukaryotic translation initiation factor 2 family. This cytoplasmic protein is ubiquitously expressed and can downregulate protein synthesis when phosphorylated by PKR kinase under stress conditions (hypoxia, viral infection, ER stress). Increased expression of eIF-2 alpha has been linked to progression of thyroid carcinoma. Signaling inhibited by p58 (IPK) and PKR phosphorylation. Can attenuate the unfolded protein response and inhibits translation. This protein has been shown to interact with eIF2B alpha, eIF2B delta, eIF2B beta subunit 2, p67, p68, and PKR. eIF-2 alpha is a target for cleavage by caspase 3, caspase 6, caspase 8, and caspase 10.

Synonyms:

CDA02; EIF-2A; MST089; MSTP004; MSTP089

Product images:


Immunocytochemistry/Immunofluorescence: eIF2A Antibody (3A7B11) TA337129 - eIF2A antibody (1:50) was tested in HeLa cells with Dylight 488 (green). Nuclei and alpha-tubulin were counterstained with DAPI (blue) and Dylight 550 (red). Image objective 40x.



Western Blot: eIF2A Antibody (3A7B11) TA337129 - Western blot analysis of HeLa (1), NIH3T3 (2), A431 (3), MCF-7 (4), Ntera2 (5), PC12 (6), HepG2 (7), and Cos7 (8) cell lysate using eIF2A antibody at a concentration of 2 ug/ml.