

## Product datasheet for **TA337083**

### Catalase (CAT) Rabbit Polyclonal Antibody

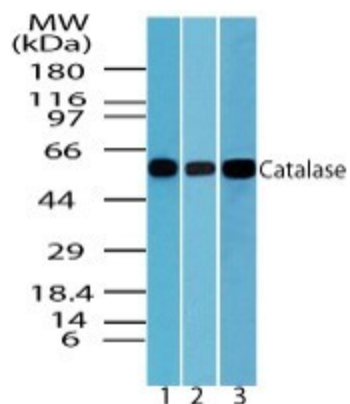
#### Product data:

Product Type:	Primary Antibodies
Applications:	IHC, WB
Recommended Dilution:	WB: 0.1-0.5 ug/ml, IHC: , IHC-P: 5 ug/ml
Reactivity:	Human, Mouse, Rat, Bovine
Host:	Rabbit
Clonality:	Polyclonal
Immunogen:	The catalase enzyme from bovine liver was used as the immunogen.
Formulation:	PBS containing 0.05% BSA, 0.05% Sodium Azide. Store at 4C short term. Aliquot and store at -20C long term. Avoid freeze-thaw cycles.
Concentration:	lot specific
Purification:	Protein A purified
Conjugation:	Unconjugated
Storage:	Store at -20°C as received.
Stability:	Stable for 12 months from date of receipt.
Gene Name:	catalase
Database Link:	<a href="#">NP_001743</a> <a href="#">Entrez Gene 12359 Mouse</a> <a href="#">Entrez Gene 24248 Rat</a> <a href="#">Entrez Gene 847 Human</a> <a href="#">P04040</a>
Synonyms:	MGC138422; MGC138424
Protein Families:	Druggable Genome
Protein Pathways:	Amyotrophic lateral sclerosis (ALS), Metabolic pathways, Methane metabolism, Tryptophan metabolism

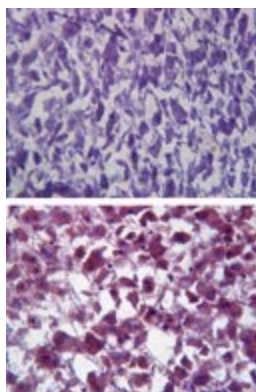


[View online »](#)

## Product images:



Western Blot: Catalase Antibody TA337083 - Analysis in liver lysate of 1) human 2) mouse and 3) rat at 0.1 ug/ml.



Immunohistochemistry-Paraffin: Catalase Antibody TA337083 - Staining of human liver tissue using an isotype control (top) and this antibody (bottom) at 5 ug/ml.