

Product datasheet for **TA337080**

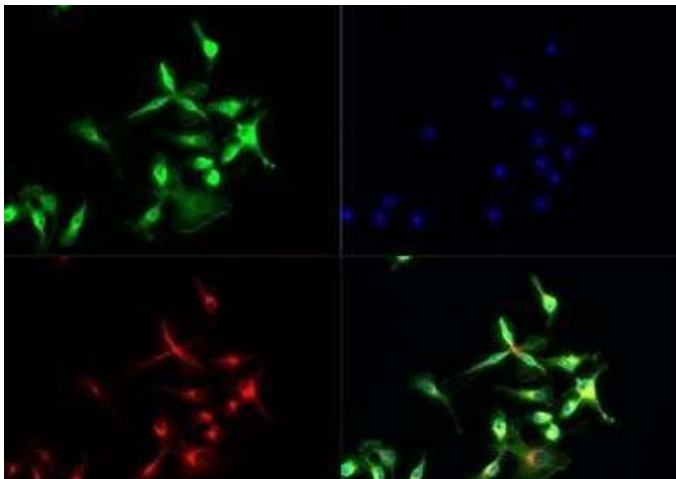
TLR7 Rabbit Polyclonal Antibody

Product data:

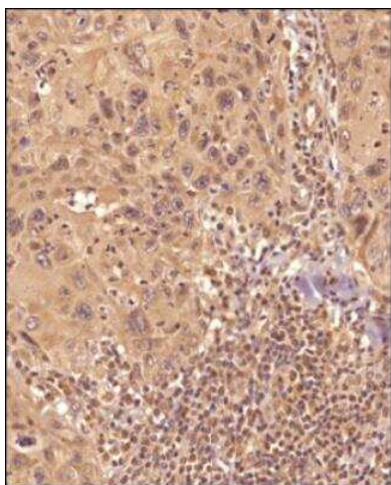
Product Type:	Primary Antibodies
Applications:	Dot, FC, ICC/IF, IHC, IP, WB
Recommended Dilution:	Immunocytochemistry/ Immunofluorescence: 1:10-1:2000, Flow (Intracellular), Immunohistochemistry-Paraffin: 1:200, Immunohistochemistry: 1:200, Immunoprecipitation, Dot Blot, Proximity Ligation Assay, Bioactivity, Immunohistochemistry-Frozen: 1:10-1:2000, Flow Cytometry: 2-5 ug/ 1x10 ⁶ cells, Western Blot: 1-3 ug/ml
Reactivity:	Human, Mouse, Rat
Host:	Rabbit
Isotype:	IgG
Clonality:	Polyclonal
Immunogen:	This antibody was developed against KLH-conjugated synthetic peptide corresponding to amino acids 706-749 of human TLR7; GenBank no. gb AAF78035.1 AF245702_1. It will cross-react with mouse TLR7. In human Ramos cells, additional bands are seen.
Formulation:	PBS containing 0.05% BSA, 0.05% Sodium Azide. Store at 4C short term. Aliquot and store at -20C long term. Avoid freeze-thaw cycles.
Concentration:	lot specific
Purification:	Protein G purified
Conjugation:	Unconjugated
Storage:	Store at -20°C as received.
Stability:	Stable for 12 months from date of receipt.
Gene Name:	toll like receptor 7
Database Link:	NP_057646 Entrez Gene 170743 Mouse Entrez Gene 317468 Rat Entrez Gene 51284 Human Q9NYK1
Synonyms:	TLR7-like
Protein Families:	Druggable Genome, Transmembrane
Protein Pathways:	Toll-like receptor signaling pathway



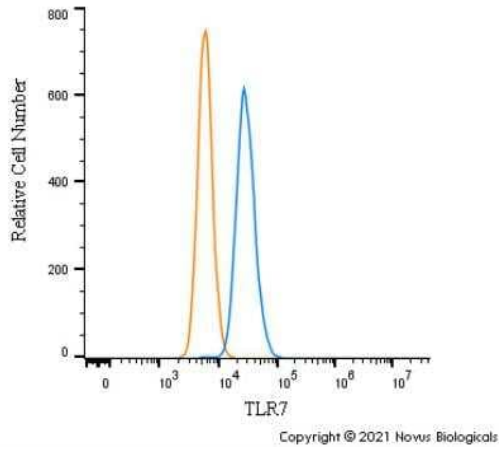
[View online »](#)

Product images:

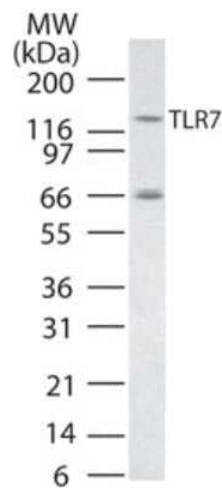
Immunocytochemistry/Immunofluorescence: TLR7 Antibody TA337080 - Analysis using the Azide Free version of TA337080. Staining of Raw 246.7 cells with Dylight 488 (green). Nuclei and alpha-tubulin were counterstained with DAPI (blue) and Dylight 550 (red). Image objective 40x. An antibody dilution of 1:10 was used.



Immunohistochemistry-Paraffin: TLR7 Antibody - BSA Free TA337080 - Analysis of a FFPE tissue section of human skin using 1:200 dilution of TLR7 antibody (TA337080). The staining was developed using HRP labeled anti-rabbit secondary antibody and DAB reagent, and nuclei of cells were counter-stained with hematoxylin.



Flow Cytometry: TLR7 Antibody TA337080 - An intracellular stain was performed on THP-1 cells with TA337080 (blue) and a matched isotype control NBP2-24891 (orange). Cells were fixed with 4% PFA and then permeabilized with 0.1% saponin. Cells were incubated in an antibody dilution of 1 ug/mL for 30 minutes at room temperature, followed by Rabbit IgG (H+L) Cross-Adsorbed Secondary Antibody, Dylight 550 (SA5-10033, Thermo Fisher).



Western Blot: TLR7 Antibody TA337080 - Analysis using the Azide Free version of TA337080. Detection of TLR7 in RAW cell lysate using this antibody.