

Product datasheet for **TA337073**

Cytochrome C (CYCS) Mouse Monoclonal Antibody [Clone ID: 6H2.B4]

Product data:

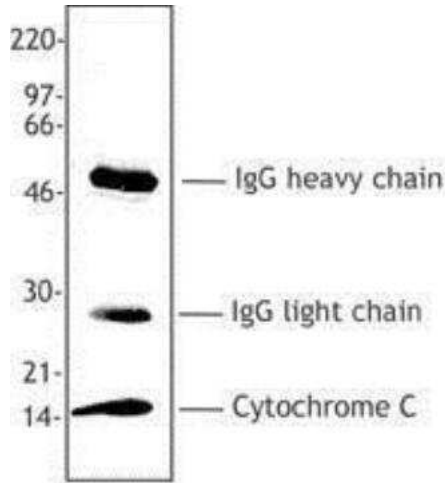
Product Type:	Primary Antibodies
Clone Name:	6H2.B4
Applications:	Block/Neutralize, ICC/IF, IHC, IP
Recommended Dilution:	Immunocytochemistry/ Immunofluorescence, Immunohistochemistry, Immunoprecipitation: 2 ug/1X10 ⁶ cells, Block/Neutralize
Reactivity:	Human, Mouse, Rat
Host:	Mouse
Isotype:	IgG1, kappa
Clonality:	Monoclonal
Immunogen:	Rat cytochrome c was used as immunogen to generate 6H2.B4 hybridoma clone (Goshorn et al, 1991). The antibody recognizes an epitope around residue 62 of rat Cytochrome c, based on copetitive ELISA results (Goshorn et al. 1991).
Formulation:	PBS containing 0.05% BSA, 0.05% Sodium Azide. Store at 4C short term. Aliquot and store at -20C long term. Avoid freeze-thaw cycles.
Concentration:	lot specific
Purification:	Protein G purified
Conjugation:	Unconjugated
Storage:	Store at -20°C as received.
Stability:	Stable for 12 months from date of receipt.
Gene Name:	cytochrome c, somatic
Database Link:	NP_061820 Entrez Gene 13063 Mouse Entrez Gene 25309 Rat Entrez Gene 54205 Human P99999
Synonyms:	CYC; HCS; THC4
Protein Families:	Druggable Genome



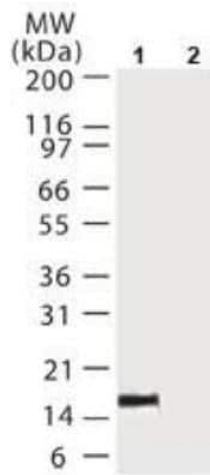
[View online »](#)

Protein Pathways: Alzheimer's disease, Amyotrophic lateral sclerosis (ALS), Apoptosis, Colorectal cancer, Huntington's disease, p53 signaling pathway, Parkinson's disease, Pathways in cancer, Small cell lung cancer, Viral myocarditis

Product images:



Immunoprecipitation: Cytochrome c Antibody (6H2.B4) TA337073 - Cytochrome c was immunoprecipitated from HeLa cell extract (1% NP-40) using 2-4 ug 6H2.B4 antibody/1 x10⁷ cell equivalents.



Immunoprecipitation: Cytochrome c Antibody (6H2.B4) TA337073 - Immunoprecipitation/analysis using cytochrome c antibodies. Two micrograms of cytochrome c antibody clone 6H2.B4 (lane 1) or control IgG antibody (lane 2) were used to immunoprecipitate cytochrome c from 1 x 10⁶ HeLa cells. The immunoprecipitated protein was resolved by SDS-PAGE and probed with cytochrome antibody clone 7H8.2C12 .