

Product datasheet for **TA337072**

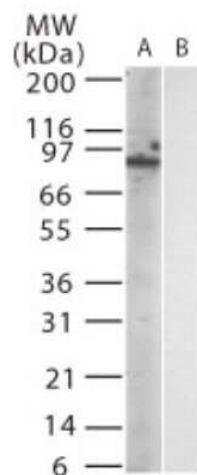
Tlr12 Mouse Monoclonal Antibody [Clone ID: 15F1215]

Product data:

Product Type:	Primary Antibodies
Clone Name:	15F1215
Applications:	WB
Recommended Dilution:	Western Blot: 1: 1000
Reactivity:	Mouse
Host:	Mouse
Isotype:	IgM
Clonality:	Monoclonal
Immunogen:	This antibody was developed against amino acids 791-821 of mouse TLR12; GenBank NP_991392.1
Formulation:	Preservative: 0.05% Sodium Azide. Aliquot and store at -20C or -80C. Avoid freeze-thaw cycles.
Concentration:	lot specific
Purification:	Ascites
Conjugation:	Unconjugated
Storage:	Store at -20°C as received.
Stability:	Stable for 12 months from date of receipt.
Gene Name:	toll-like receptor 12
Database Link:	NP_991392 Entrez Gene 384059 Mouse Q6QNU9
Synonyms:	Gm1365; RGD1559145; Tlr11
Note:	Based on sequence homology, this antibody may also detect mouse TLR11. There is a 69% sequence homology (not the 100% sequence homology as reported by NCBI)



[View online »](#)

Product images:

Western Blot: TLR12 Antibody (15F1215)
TA337072 - Analysis of mouse TLR12 in (A)
transfected and (B) untransfected cell lysate using
this antibody at 1:1000.