

Product datasheet for **TA337071**

Raptor (RPTOR) Rabbit Polyclonal Antibody

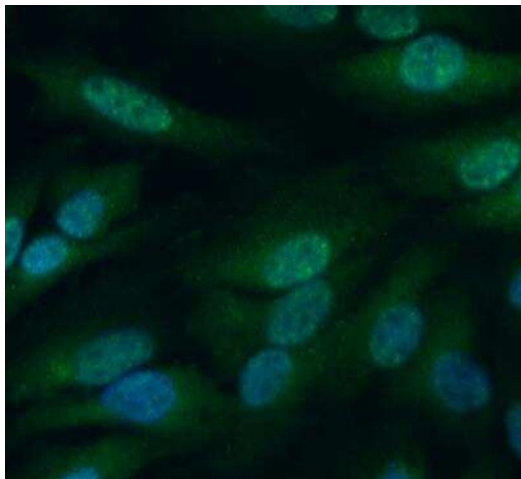
Product data:

Product Type:	Primary Antibodies
Applications:	ICC/IF, IHC, WB
Recommended Dilution:	Immunohistochemistry, Western Blot: 1: 1000-1:2000, Immunohistochemistry-Paraffin: 1: 100, Immunocytochemistry/ Immunofluorescence: 1:100
Reactivity:	Human, Mouse
Host:	Rabbit
Clonality:	Polyclonal
Immunogen:	A portion of amino acids 900-950 of human Raptor was used as the immunogen for this antibody.
Formulation:	Store at -20C. Avoid freeze-thaw cycles.
Concentration:	lot specific
Purification:	Whole antisera
Conjugation:	Unconjugated
Storage:	Store at -20°C as received.
Stability:	Stable for 12 months from date of receipt.
Gene Name:	regulatory associated protein of MTOR complex 1
Database Link:	NP_001156506 Entrez Gene 74370 Mouse Entrez Gene 57521 Human Q8N122
Synonyms:	KOG1; Mip1
Protein Pathways:	Insulin signaling pathway, mTOR signaling pathway

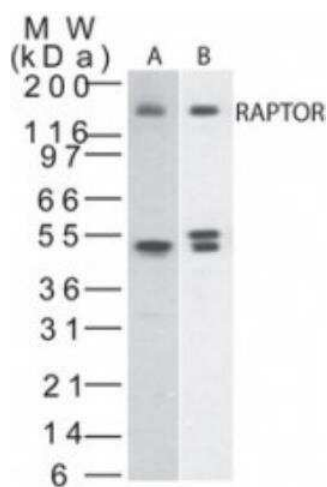


[View online »](#)

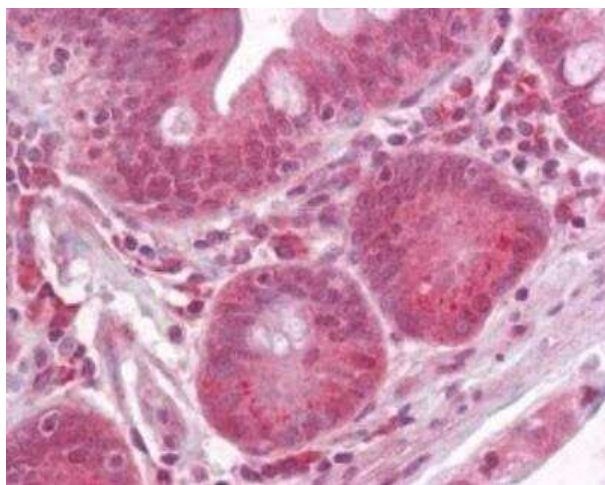
Product images:



Immunocytochemistry/Immunofluorescence: RPTOR Antibody TA337071 - HeLa cells were fixed for 10 minutes using 10% formalin and then permeabilized for 5 minutes using 1X PBS + 0.05% Triton-X100. The cells were incubated with anti-RPTOR at a 1:100 overnight at 4C and detected with an anti-rabbit Dylight 488 (Green) at a 1:500 dilution. Nuclei were counterstained with DAPI (Blue). Cells were imaged using a 40X objective.



Western Blot: RPTOR Antibody TA337071 - Analysis of Raptor in A) human 293 and B) mouse NIH 3T3 lysate using Raptor antibody at 1:2000.



Immunohistochemistry-Paraffin: RPTOR Antibody TA337071 - Analysis of human small intestine using Raptor antibody at 1:100.