

## Product datasheet for **TA337070**

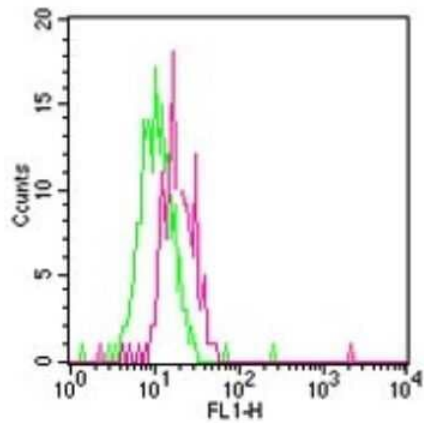
### Tlr12 Rabbit Polyclonal Antibody

#### Product data:

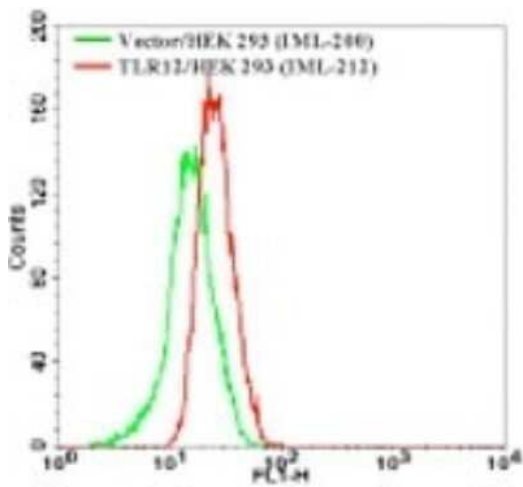
Product Type:	Primary Antibodies
Applications:	FC, WB
Recommended Dilution:	Flow Cytometry: 1:10-1:1000, Western Blot: 1:100-1:2000, Flow (Intracellular)
Reactivity:	Mouse, Rat
Host:	Rabbit
Isotype:	IgG
Clonality:	Polyclonal
Immunogen:	This antibody was developed against a synthetic peptide corresponding to amino acids of 743-756 (RVWLQGLRGKGDKG) of mouse TLR12.
Formulation:	PBS containing 0.05% BSA, 0.05% Sodium Azide. Store at 4C short term. Aliquot and store at -20C long term. Avoid freeze-thaw cycles.
Concentration:	lot specific
Purification:	Protein G purified
Conjugation:	Unconjugated
Storage:	Store at -20°C as received.
Stability:	Stable for 12 months from date of receipt.
Gene Name:	toll-like receptor 12
Database Link:	<a href="#">NP_991392</a> <a href="#">Entrez Gene 362604 Rat</a> <a href="#">Entrez Gene 384059 Mouse</a> <a href="#">Q6QNU9</a>
Synonyms:	Gm1365; RGD1559145; Tlr11



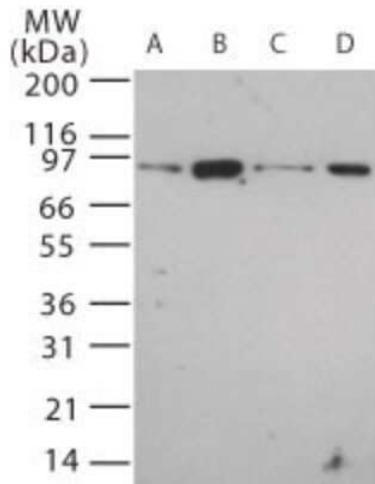
[View online »](#)

**Product images:**

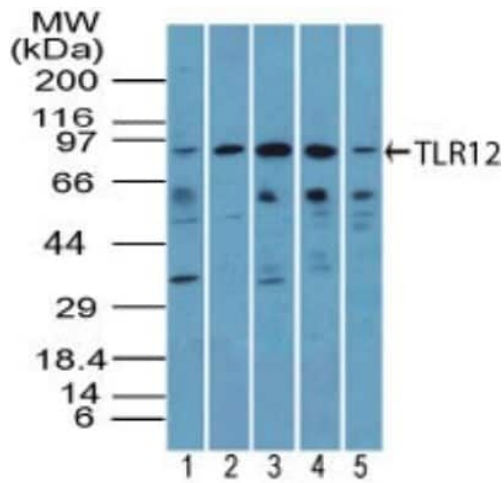
Flow Cytometry: TLR12 Antibody TA337070 - Analysis using the FITC conjugate of TA337070. Staining of TLR12 in Balb/c mouse splenocytes using this antibody at 1 ug/10<sup>6</sup> cells. Green represents rabbit IgG isotype control was used for this test.



Flow (Intracellular): TLR12 Antibody TA337070 - Analysis using the FITC conjugate of TA337070. Staining of TLR12 in the TLR12 table cell line using this antibody at 1 ug/10<sup>6</sup> cells (green represents vector control, red represents TLR12 antibody).



Western Blot: TLR12 Antibody TA337070 - Analysis of TLR12 in 20 ug/lane of mouse (A) brain, (B) heart, (C) small intestine, (D) kidney tissue lysate using this antibody at 5 ug/ml.



Western Blot: TLR12 Antibody TA337070 - Analysis of TLR12 in male rat reproductive tissue: 1) whole testis, 2) caput, 3) corpus, 4) cauda and 5) vas deferens using this antibody at 4 ug/ml.