

Product datasheet for **TA337069**

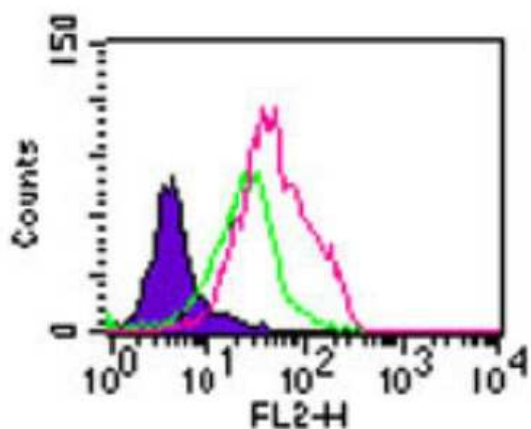
TLR5 Rabbit Polyclonal Antibody

Product data:

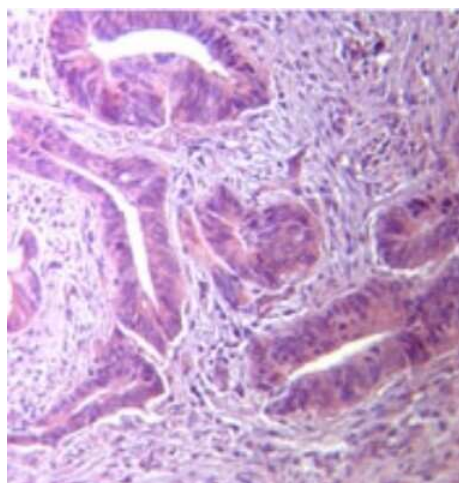
Product Type:	Primary Antibodies
Applications:	FC, IHC, WB
Recommended Dilution:	Flow (Cell Surface), Immunohistochemistry, In vitro assay, Western Blot: 1 - 3 ug/mL, Immunohistochemistry-Paraffin, Flow Cytometry: 1 - 2 ug/10 ⁶ cells
Reactivity:	Human, Mouse, Rat, Porcine
Host:	Rabbit
Isotype:	IgG
Clonality:	Polyclonal
Immunogen:	This antibody was developed against KLH-conjugated synthetic peptide corresponding to a portion of human TLR5 found between amino acids 300-350. It will cross-react with mouse and rat TLR5.
Formulation:	PBS containing 0.05% BSA, 0.05% Sodium Azide. Store at -20C. Avoid freeze-thaw cycles.
Concentration:	lot specific
Purification:	Protein G purified
Conjugation:	Unconjugated
Storage:	Store at -20°C as received.
Stability:	Stable for 12 months from date of receipt.
Gene Name:	toll like receptor 5
Database Link:	NP_003259 Entrez Gene 53791 Mouse Entrez Gene 289337 Rat Entrez Gene 7100 Human O60602
Synonyms:	MELIOS; SLE1; SLEB1; TIL3
Protein Families:	Druggable Genome, Transmembrane
Protein Pathways:	Pathogenic Escherichia coli infection, Toll-like receptor signaling pathway



[View online »](#)

Product images:

Flow Cytometry: TLR5 Antibody TA337069 - Intracellular flow analysis of TLR5 in Balb/c mouse splenocytes using TLR5 antibody at 2 $\mu\text{g}/10^6$ cells. Shaded histogram: cells without antibody. Green: rabbit IgG isotype control. Red: TLR5 antibody. Goat anti-rabbit PE was used as secondary antibody.



Immunohistochemistry-Paraffin: TLR5 Antibody TA337069 - Analysis of TLR5 in FFPE human stomach tumor tissue using TLR5 antibody at 10 $\mu\text{g}/\text{mL}$.