

Product datasheet for **TA337067**

TLR5 Mouse Monoclonal Antibody [Clone ID: 19D759.2]

Product data:

Product Type:	Primary Antibodies
Clone Name:	19D759.2
Applications:	Dot, FC, ICC/IF, IHC, IP, WB
Recommended Dilution:	Western Blot: 1-3 ug/ml, Immunohistochemistry-Paraffin: 5 ug/ml, Immunohistochemistry-Frozen: 10 ug/ml, Flow Cytometry: 0.5-1 ug/10 ⁶ cells, Flow (Cell Surface), Flow (Intracellular): 0.5-1 ug/10 ⁶ cells, Immunohistochemistry: 1:10-1:500, Dot Blot, Immunocytochemistry/Immunofluorescence: 5 ug/ml, Immunoprecipitation
Reactivity:	Human, Mouse, Canine
Host:	Mouse
Isotype:	IgG2a, kappa
Clonality:	Monoclonal
Immunogen:	This antibody was developed against KLH-conjugated synthetic peptide corresponding to a portion of human TLR5 between amino acids 700-800. The antibody also reacts with mouse TLR5.
Formulation:	PBS containing 0.05% BSA, 0.05% Sodium Azide. Store at -20C. Avoid freeze-thaw cycles.
Concentration:	lot specific
Purification:	Protein G purified
Conjugation:	Unconjugated
Storage:	Store at -20°C as received.
Stability:	Stable for 12 months from date of receipt.
Gene Name:	toll like receptor 5
Database Link:	NP_003259 Entrez Gene 53791 Mouse Entrez Gene 7100 Human O60602
Synonyms:	MELIOS; SLE1; SLEB1; TIL3
Note:	Staining of formalin-fixed tissues is enhanced by boiling tissue sections in 10 mM sodium citrate buffer, pH 6.0 for 10-20 min followed by cooling at RT for 20 min.

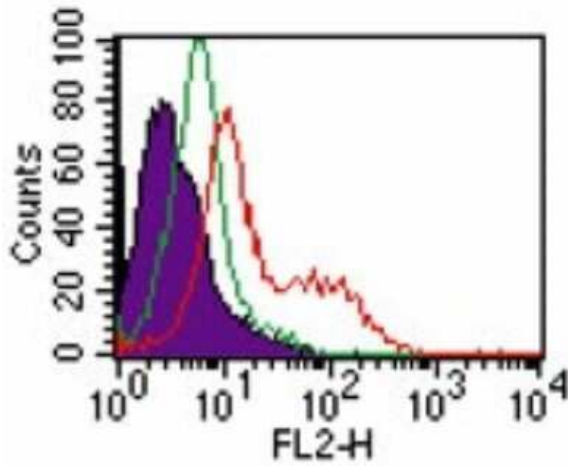


[View online »](#)

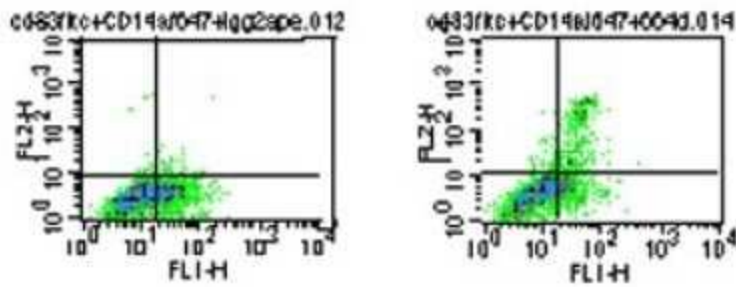
Protein Families: Druggable Genome, Transmembrane

Protein Pathways: Pathogenic Escherichia coli infection, Toll-like receptor signaling pathway

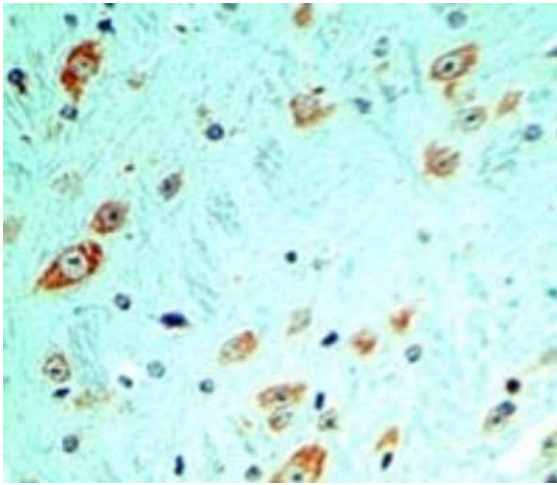
Product images:



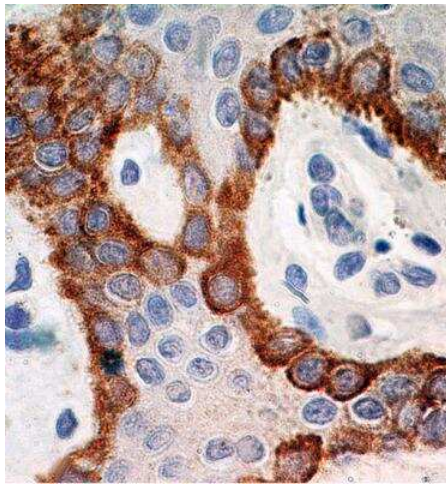
Flow Cytometry: TLR5 Antibody (19D759.2) TA337067 - Intracellular flow analysis of TLR5 in human monocytes using 0.5 ug of TLR5 antibody. Shaded histogram represents cells without antibody; green represents isotype control; red represents TLR5 antibody. this antibody secondary antibody was used in this test.



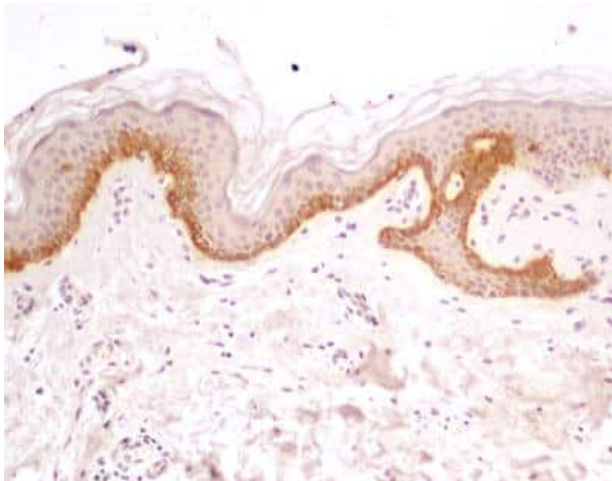
Flow Cytometry: TLR5 Antibody (19D759.2) TA337067 - Analysis using the PE conjugate of TA337067. Staining of CD14-/CD83+/TLR5+ differentiated myeloid dendritic cells (mDCs). PBMCs were stimulated 5 days with GM-CSF+IL4 prior to the staining. The cells were stained for surface markers CD14 and CD83 FITC, and TLR5 PE. CD14- cells were gated and stained with PE-conjugated isotype control (mouse IgG2a), and FITC-conjugated CD83 (left). CD14- cells were gated and stained with 1 ug PE-conjugated TLR5, and FITC-conjugated CD83 (right).



Immunohistochemistry-Paraffin: TLR5 Antibody (19D759.2) TA337067 - Analysis of TLR5 in FFPE mouse brain tissue using TLR5 antibody at 5 ug/ml.



Immunohistochemistry-Paraffin: TLR5 Antibody (19D759.2) TA337067 - Human skin stained with TLR5 antibody (5 ug/ml), peroxidase-conjugate and DAB chromogen.



Immunohistochemistry-Paraffin: TLR5 Antibody (19D759.2) TA337067 - Analysis of FFPE tissue section of normal human skin using 5 ug/ml concentration of TLR5 antibody (clone 19D759.2). Intense membrane staining of TLR5 was observed specifically in the pigmented basal cells of epidermal layer [10X Magnification]