

Product datasheet for **TA337065**

TLR7 Rabbit Polyclonal Antibody

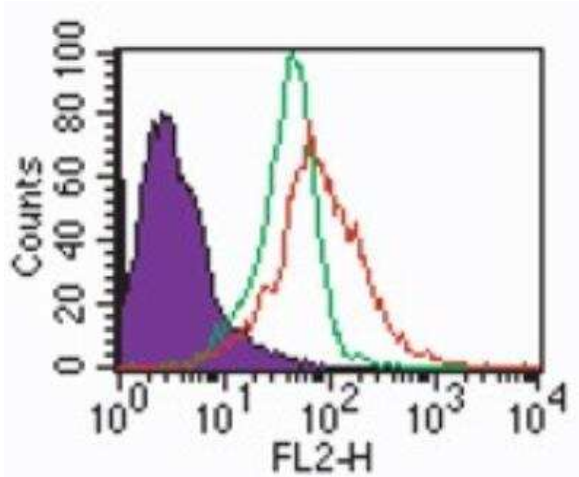
Product data:

Product Type:	Primary Antibodies
Applications:	FC, IHC, WB
Recommended Dilution:	Immunohistochemistry, Western Blot: 0.5-2 ug/ml, Flow Cytometry: 1-2 ug / 10 ⁶ cells, Immunohistochemistry-Paraffin
Reactivity:	Human, Primate
Host:	Rabbit
Isotype:	IgG
Clonality:	Polyclonal
Immunogen:	A portion of amino acids 900-950 of human TLR7 was used as the immunogen.
Formulation:	PBS containing 0.05% BSA, 0.05% Sodium Azide. Store at 4C short term. Aliquot and store at -20C long term. Avoid freeze-thaw cycles.
Concentration:	lot specific
Purification:	Protein G purified
Conjugation:	Unconjugated
Storage:	Store at -20°C as received.
Stability:	Stable for 12 months from date of receipt.
Gene Name:	toll like receptor 7
Database Link:	NP_057646 Entrez Gene 51284 Human Q9NYK1
Synonyms:	TLR7-like
Protein Families:	Druggable Genome, Transmembrane
Protein Pathways:	Toll-like receptor signaling pathway

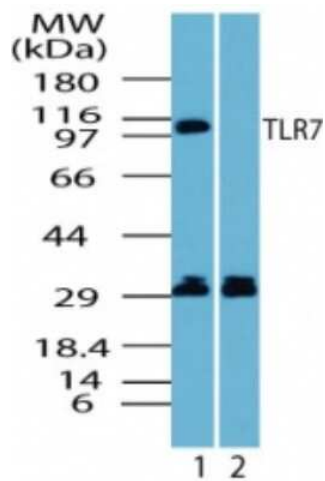


[View online »](#)

Product images:



Flow Cytometry: TLR7 Antibody TA337065 - Intracellular staining by analysis of TLR7 in human PBMCs using this antibody at 2 ug/ml. Shaded histogram represents cells alone; green represents rabbit IgG isotype control, and red represents the TLR7 antibody.



Western Blot: TLR7 Antibody TA337065 - Analysis of human TLR7 in Ramos cell lysate in the 1) absence and 2) presence of immunizing peptide using this antibody.