

Product datasheet for **TA337064**

Gastrokine 1 (GKN1) Rabbit Polyclonal Antibody

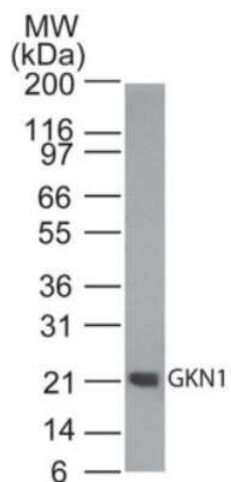
Product data:

Product Type:	Primary Antibodies
Applications:	WB
Recommended Dilution:	Western Blot: 0.1-0.2 ug/ml
Reactivity:	Human, Equine, Porcine, Primate
Host:	Rabbit
Isotype:	IgG
Clonality:	Polyclonal
Immunogen:	The portions of amino acids range between 100-150 of human GKN1 was used as the immunogen.
Formulation:	PBS containing 0.05% BSA, 0.05% Sodium Azide. Store at 4C short term. Aliquot and store at -20C long term. Avoid freeze-thaw cycles.
Concentration:	lot specific
Purification:	Protein G purified
Conjugation:	Unconjugated
Storage:	Store at -20°C as received.
Stability:	Stable for 12 months from date of receipt.
Gene Name:	gastrokine 1
Database Link:	NP_062563 Entrez Gene 56287 Human Q9NS71
Synonyms:	AMP18; BRICD1; CA11; FOV; foveolin
Protein Families:	Secreted Protein, Transmembrane



[View online »](#)

Product images:



Western Blot: Gastrokine 1 Antibody TA337064 - Analysis of GKN1 in human stomach tissue lysate using this antibody. 1 ug/ml. Goat anti-rabbit Ig HRP secondary antibody and PicoTect ECL substrate solution were used for this test.