

## Product datasheet for **TA337062**

### EDG3 (S1PR3) Rabbit Polyclonal Antibody

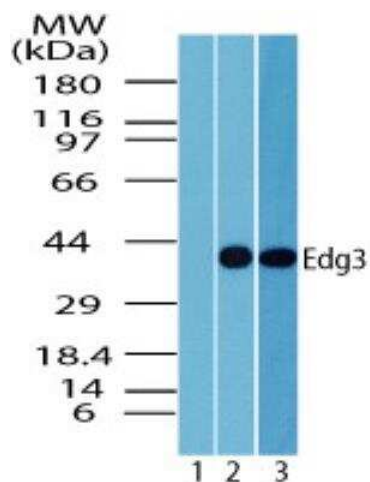
#### Product data:

Product Type:	Primary Antibodies
Applications:	IHC, WB
Recommended Dilution:	Immunohistochemistry, Western Blot: 1.0-2.0 ug/ml, Immunohistochemistry-Paraffin: 5 ug/ml
Reactivity:	Human, Mouse
Host:	Rabbit
Isotype:	IgG
Clonality:	Polyclonal
Immunogen:	A portion of amino acids 300-350 of human Sphingolipid Receptor Edg3/S1P3 was used as the immunogen.
Formulation:	PBS containing 0.05% BSA, 0.05% Sodium Azide. Store at 4C short term. Aliquot and store at -20C long term. Avoid freeze-thaw cycles.
Concentration:	lot specific
Purification:	Protein G purified
Conjugation:	Unconjugated
Storage:	Store at -20°C as received.
Stability:	Stable for 12 months from date of receipt.
Gene Name:	sphingosine-1-phosphate receptor 3
Database Link:	<a href="#">NP_005217</a> <a href="#">Entrez Gene 13610 Mouse</a> <a href="#">Entrez Gene 1903 Human</a> <a href="#">Q99500</a>
Synonyms:	EDG-3; EDG3; LPB3; S1P3
Protein Families:	Druggable Genome, GPCR, Transmembrane
Protein Pathways:	Neuroactive ligand-receptor interaction

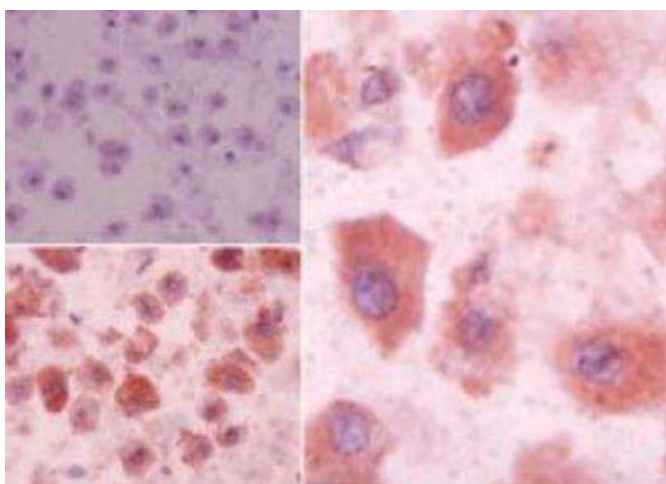


[View online »](#)

## Product images:



Western Blot: S1P3/EDG-3 Antibody TA337062 - Sphingolipid Receptor Edg3/S1P3 in kidney lysate. Lane 1 shows pre-immune sera. Lanes 2 and 3 show TA337062 tested on human kidney (2 ug/ml) and mouse kidney (1 ug/ml) lysate.



Immunohistochemistry-Paraffin: S1P3/EDG-3 Antibody TA337062 - Human liver tissue using an isotype control (top left) and TA337062 (bottom left, right) at 5 ug/ml.