

Product datasheet for **TA337060**

RUNX2 Rabbit Polyclonal Antibody

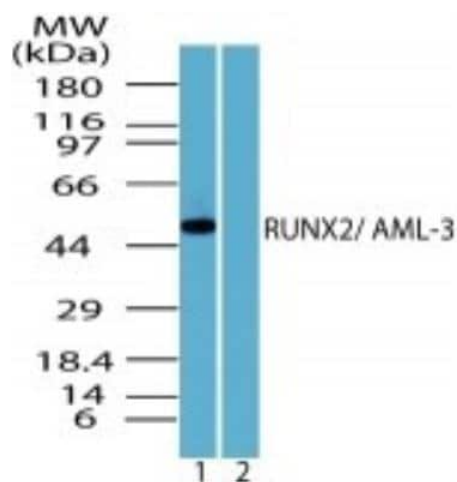
Product data:

Product Type:	Primary Antibodies
Applications:	WB
Recommended Dilution:	Western Blot: 1 - 3 ug/mL
Reactivity:	Human, Mouse, Chicken, Equine, Primate
Host:	Rabbit
Isotype:	IgG
Clonality:	Polyclonal
Immunogen:	A synthetic peptide corresponding to somewhere between amino acids 250-300 of human RUNX2 was used as immunogen. RUNX2 and RUNX1 share an approximate 66% homology in peptide sequence used as immunogen.
Formulation:	PBS containing 0.05% BSA, 0.05% Sodium Azide. Store at -20C. Avoid freeze-thaw cycles.
Concentration:	lot specific
Purification:	Protein G purified
Conjugation:	Unconjugated
Storage:	Store at -20°C as received.
Stability:	Stable for 12 months from date of receipt.
Gene Name:	runt related transcription factor 2
Database Link:	NP_001019801 Entrez Gene 12393 Mouse Entrez Gene 860 Human Q13950
Synonyms:	AML3; CBF-alpha-1; CBFA1; CCD; CCD1; CLCD; OSF-2; OSF2; PEA2aA; PEBP2aA
Protein Families:	Druggable Genome, Transcription Factors



[View online »](#)

Product images:



Western Blot: RUNX2/CBFA1 Antibody TA337060 - Analysis of human RUNX2 in Saos-2 cell lysate in the 1) absence and 2) presence of immunizing peptide using RUNX2 antibody at 2 ug/mL.