

Product datasheet for **TA337058**

Importin 8 (IPO8) Rabbit Polyclonal Antibody

Product data:

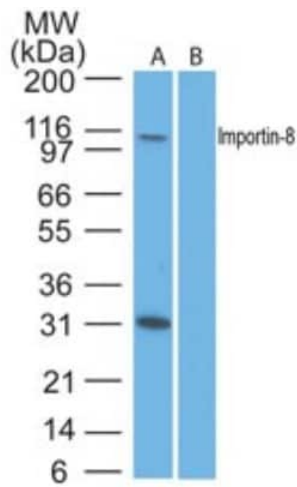
Product Type:	Primary Antibodies
Applications:	ICC/IF, IP, Simple Western, WB
Recommended Dilution:	Immunoprecipitation, Simple Western: 1:20, Immunocytochemistry/ Immunofluorescence: 1:20-1:2000, Western Blot: 1:200-1:2000
Reactivity:	Human, Primate
Host:	Rabbit
Isotype:	IgG
Clonality:	Polyclonal
Immunogen:	A portion of amino acids 850-900 of human Importin-8 was used as immunogen for the antibody.
Formulation:	PBS containing 0.05% BSA, 0.05% Sodium Azide. Store at -20C. Avoid freeze-thaw cycles.
Concentration:	lot specific
Purification:	Protein G purified
Conjugation:	Unconjugated
Storage:	Store at -20°C as received.
Stability:	Stable for 12 months from date of receipt.
Gene Name:	importin 8
Database Link:	NP_001177924 Entrez Gene 10526 Human O15397
Synonyms:	RANBP8



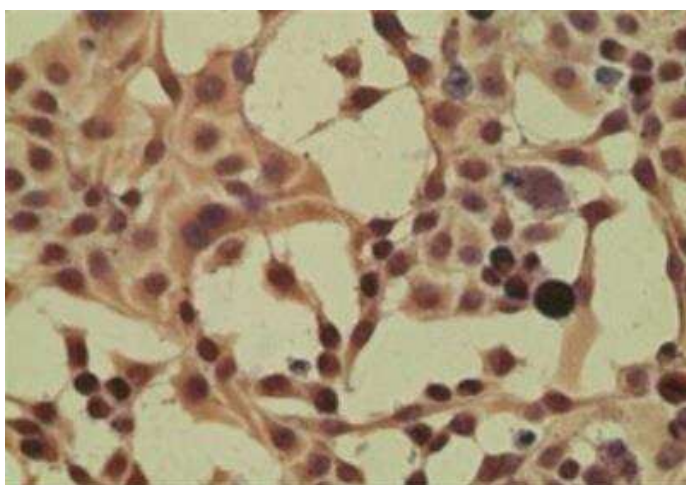
[View online »](#)

Product images:


Simple Western: Importin-8 Antibody TA337058 - Simple Western lane view shows a specific band for Importin-8 in 0.5 mg/ml of HeLa lysate. This experiment was performed under reducing conditions using the 12-230 kDa separation system.



Western Blot: Importin-8 Antibody TA337058 - Analysis of Importin-8 in HeLa lysate in the 1) absence and 2) presence of immunizing peptide using Importin-8 antibody at 1 ug/ml.



Immunocytochemistry/Immunofluorescence:
Importin-8 Antibody TA337058 - ICC staining of
HeLa cells using Importin-8 antibody at 5 ug/ml.