

## Product datasheet for **TA337056**

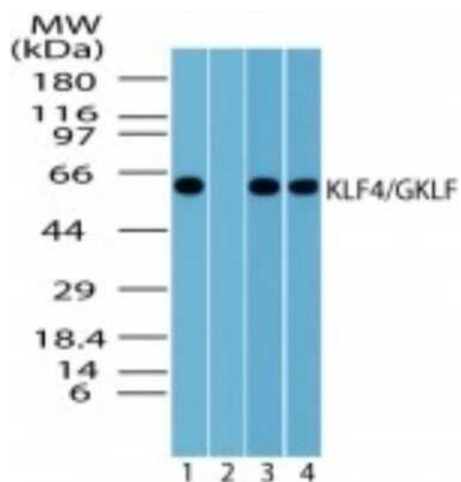
### KLF4 Rabbit Polyclonal Antibody

#### Product data:

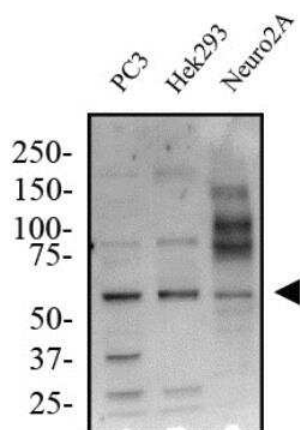
Product Type:	Primary Antibodies
Applications:	FC, ICC/IF, IHC, WB
Recommended Dilution:	Western Blot: 1-3 ug/ml, Immunohistochemistry-Paraffin: 10 ug/ml, Flow Cytometry: 1 ug/10 <sup>6</sup> cells, Immunohistochemistry, Immunocytochemistry/ Immunofluorescence: 1:10-1:500
Reactivity:	Human, Mouse, Rat, Bovine, Primate
Host:	Rabbit
Isotype:	IgG
Clonality:	Polyclonal
Immunogen:	A portion of amino acids 1-50 of human KLF4 was used as the immunogen for this antibody.
Formulation:	PBS containing 0.05% BSA, 0.05% Sodium Azide. Store at -20C. Avoid freeze-thaw cycles.
Concentration:	lot specific
Purification:	Protein G purified
Conjugation:	Unconjugated
Storage:	Store at -20°C as received.
Stability:	Stable for 12 months from date of receipt.
Gene Name:	Kruppel-like factor 4 (gut)
Database Link:	<a href="#">NP_004226</a> <a href="#">Entrez Gene 16600 Mouse</a> <a href="#">Entrez Gene 114505 Rat</a> <a href="#">Entrez Gene 9314 Human</a> <a href="#">O43474</a>
Synonyms:	EZF; GKLF
Protein Families:	Adult stem cells, Embryonic stem cells, ES Cell Differentiation/IPS, Induced pluripotent stem cells, Transcription Factors



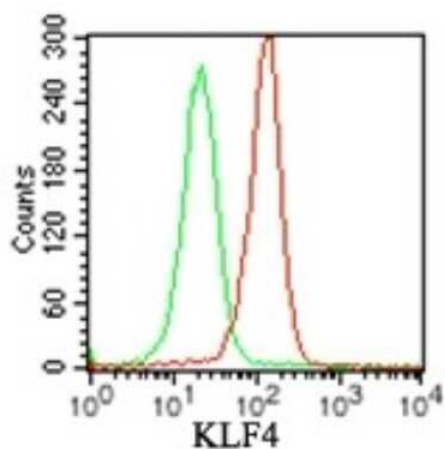
[View online »](#)

**Product images:**


Western Blot: KLF4 Antibody TA337056 - Lysate from human 293 cells in the (1) absence and (2) presence of immunizing peptide, (3) mouse NIH 3T3, and (4) RAW cells probed with KLF4 antibody at 1 ug/ml (293) and 2 ug/ml (NIH 3T3 and RAW). Goat anti-rabbit IgG HRP secondary and PicoTect ECL substrate solution were used for this test.



Western Blot: KLF4 Antibody TA337056 - Total protein from Human PC3, Hek293 and Mouse Neuro2A cells was separated on a 7.5% gel by SDS-PAGE, transferred to PVDF membrane and blocked in 5% non-fat milk in TBST. The membrane was probed with 2.0 ug/ml anti-KLF4 in 1% non-fat milk in TBST and detected with an anti-rabbit HRP secondary antibody using chemiluminescence.



Flow Cytometry: KLF4 Antibody TA337056 - Intracellular analysis using KLF4 antibody. Balb/c mouse splenocytes were probed using 1 ug of KLF4 antibody (red) and 1 ug of isotype control was used for this test, and an anti-rabbit IgG PE conjugated secondary .