

Product datasheet for **TA337055**

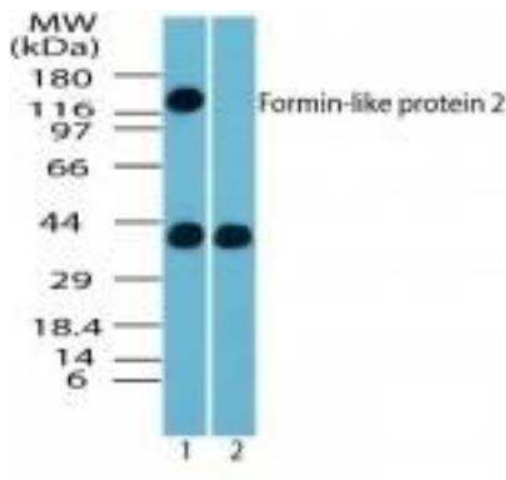
FMNL2 Rabbit Polyclonal Antibody

Product data:

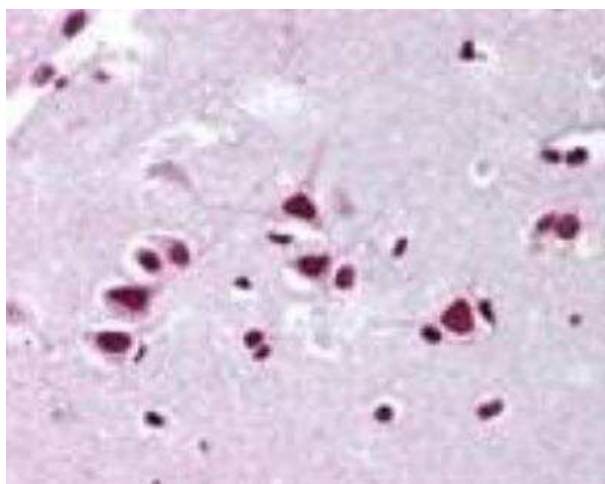
Product Type:	Primary Antibodies
Applications:	IHC, WB
Recommended Dilution:	Immunohistochemistry, Western Blot: 1-3 ug/ml, Immunohistochemistry-Paraffin: 5-10 ug/ml
Reactivity:	Human, Rat, Primate
Host:	Rabbit
Isotype:	IgG
Clonality:	Polyclonal
Immunogen:	A portion of amino acid 1-50 of human Formin-like protein 2 was used as the immunogen.
Formulation:	PBS containing 0.05% BSA, 0.05% Sodium Azide. Store at 4C short term. Aliquot and store at -20C long term. Avoid freeze-thaw cycles.
Concentration:	lot specific
Purification:	Protein G purified
Conjugation:	Unconjugated
Storage:	Store at -20°C as received.
Stability:	Stable for 12 months from date of receipt.
Gene Name:	formin like 2
Database Link:	NP_443137 Entrez Gene 311033 Rat Entrez Gene 114793 Human Q96PY5
Synonyms:	FHOD2
Protein Families:	Transcription Factors



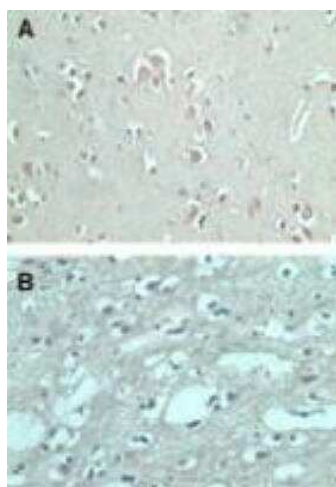
[View online »](#)

Product images:

Western Blot: FMNL2 Antibody TA337055 - Analysis of Formin-like protein 2 in whole mouse embryo body tissue lysate in the 1) absence and 2) presence of immunizing peptide using this antibody at 2 ug/ml.



Immunohistochemistry-Paraffin: FMNL2 Antibody TA337055 - Analysis of human brain, cortex using this antibody at 10 ug/ml.



Immunohistochemistry-Paraffin: FMNL2 Antibody TA337055 - Staining of normal human brain using this antibody (FMNL2, figure A and control rabbit Ig, figure B) at 6 ug/ml.