

Product datasheet for **TA337050**

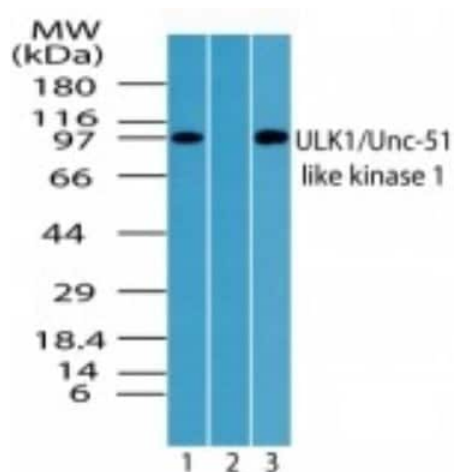
ULK1 Rabbit Polyclonal Antibody

Product data:

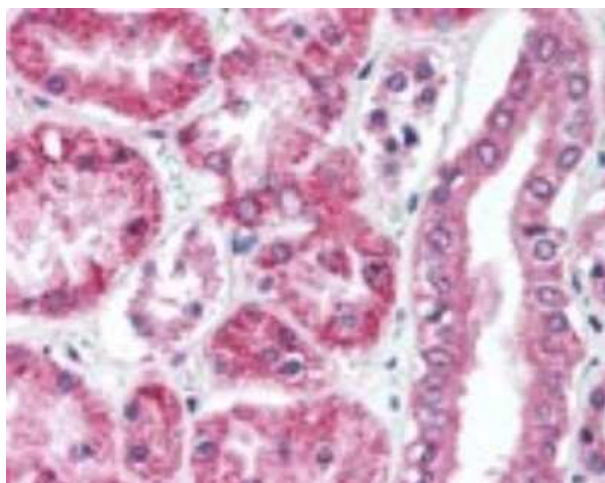
Product Type:	Primary Antibodies
Applications:	ICC/IF, IHC, WB
Recommended Dilution:	Immunohistochemistry, Western Blot: 1-3 ug/ml, Immunohistochemistry-Paraffin: 10 ug/ml, Immunocytochemistry/ Immunofluorescence
Reactivity:	Human, Mouse, Primate
Host:	Rabbit
Isotype:	IgG
Clonality:	Polyclonal
Immunogen:	A synthetic peptide corresponding to amino acids between 320 and 370 of human ULK1 was used as the immunogen, GenBank no. sp O75385.2 ULK1_HUMAN.
Formulation:	PBS containing 0.05% BSA, 0.05% Sodium Azide. Store at 4C short term. Aliquot and store at -20C long term. Avoid freeze-thaw cycles.
Concentration:	lot specific
Purification:	Protein G purified
Conjugation:	Unconjugated
Storage:	Store at -20°C as received.
Stability:	Stable for 12 months from date of receipt.
Gene Name:	unc-51 like autophagy activating kinase 1
Database Link:	NP_003556 Entrez Gene 22241 Mouse Entrez Gene 8408 Human O75385
Synonyms:	ATG1; ATG1A; hATG1; UNC51; Unc51.1
Protein Families:	Druggable Genome, Protein Kinase
Protein Pathways:	mTOR signaling pathway, Regulation of autophagy



[View online »](#)

Product images:

Western Blot: ULK1 Antibody TA337050 - Analysis of ULK1 in Raji cell lysate in the 1) absence, 2) presence of immunizing peptide and 3) RAW using this antibody.



Immunohistochemistry-Paraffin: ULK1 Antibody TA337050 - Analysis of human kidney using TA337050