

Product datasheet for **TA337048**

Bif (SH3GLB1) Mouse Monoclonal Antibody [Clone ID: 30A882.1.1]

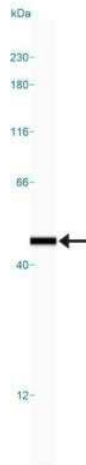
Product data:

Product Type:	Primary Antibodies
Clone Name:	30A882.1.1
Applications:	ICC/IF, IHC, IP, Simple Western, WB
Recommended Dilution:	Immunohistochemistry: 5ug/ml, Immunoprecipitation: 1:10-1:500, Simple Western: 1:200, Western Blot, Immunocytochemistry/ Immunofluorescence, Immunohistochemistry-Paraffin: 5 ug/ml
Reactivity:	Human
Host:	Mouse
Isotype:	IgG1, kappa
Clonality:	Monoclonal
Immunogen:	A full-length human Bif-1 recombinant protein was used as immunogen.
Formulation:	PBS containing 0.05% BSA, 0.05% Sodium Azide. Store at 4C short term. Aliquot and store at -20C long term. Avoid freeze-thaw cycles.
Concentration:	lot specific
Purification:	Protein G purified
Conjugation:	Unconjugated
Storage:	Store at -20°C as received.
Stability:	Stable for 12 months from date of receipt.
Gene Name:	SH3 domain containing GRB2 like endophilin B1
Database Link:	NP_057093 Entrez Gene 51100 Human Q9Y371
Synonyms:	Bif-1; CGI-61; dj612B15.2; PPP1R70
Protein Pathways:	Endocytosis

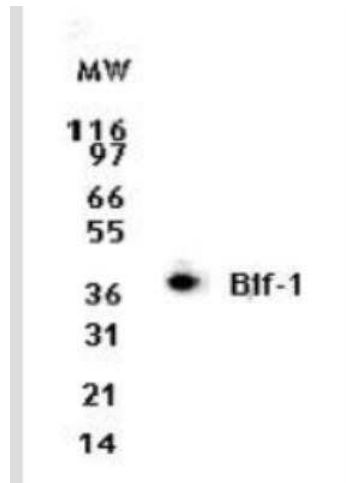


[View online »](#)

Product images:



Simple Western: Endophilin B1/Bif-1 Antibody (30A882.1.1) TA337048 - Simple Western lane view shows a specific band for Endophilin B1/Bif-1 in 0.05 mg/ml of Jurkat lysate. This experiment was performed under reducing conditions using the 12-230 kDa separation system.



Western Blot: Endophilin B1/Bif-1 Antibody (30A882.1.1) TA337048 - Analysis for Bif-1/Endophilin-B1 using this antibody at 2 ug/ml dilution against 10 ug of Jurkat cell lysate.