

Product datasheet for **TA337044**

SnoN (SKIL) Rabbit Polyclonal Antibody

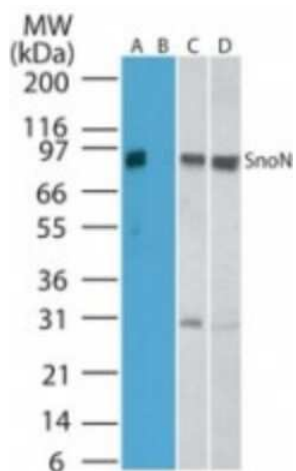
Product data:

| | |
|-----------------------|--|
| Product Type: | Primary Antibodies |
| Applications: | WB |
| Recommended Dilution: | Western Blot: 1-3 ug/ml |
| Reactivity: | Human, Mouse, Rat |
| Host: | Rabbit |
| Isotype: | IgG |
| Clonality: | Polyclonal |
| Immunogen: | A portion of amino acids 600-684 of human snoN protein were used as the immunogen. |
| Formulation: | PBS containing 0.05% BSA, 0.05% Sodium Azide. Store at 4C short term. Aliquot and store at -20C long term. Avoid freeze-thaw cycles. |
| Concentration: | lot specific |
| Purification: | Protein G purified |
| Conjugation: | Unconjugated |
| Storage: | Store at -20°C as received. |
| Stability: | Stable for 12 months from date of receipt. |
| Gene Name: | SKI-like proto-oncogene |
| Database Link: | NP_005405 Entrez Gene 20482 Mouse Entrez Gene 114208 Rat Entrez Gene 6498 Human P12757 |
| Synonyms: | SNO; SnoA; Snol; SnoN |
| Protein Families: | Druggable Genome, Transcription Factors |



[View online »](#)

Product images:



Western Blot: SnoN Antibody TA337044 - Analysis in human kidney cell lysate in the A) absence and B) presence of immunizing peptide, C) mouse kidney, and D) rat kidney cell lysate, using this antibody.