

## Product datasheet for **TA337043**

### MTSS1 Rabbit Polyclonal Antibody

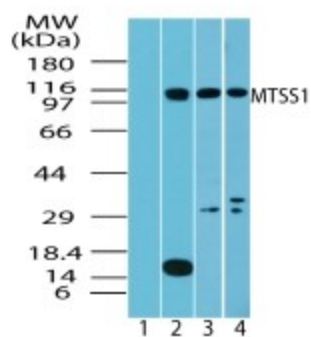
#### Product data:

Product Type:	Primary Antibodies
Applications:	WB
Recommended Dilution:	WB: 2-4 ug/ml
Reactivity:	Human, Mouse, Rat, Canine, Chicken, Primate
Host:	Rabbit
Isotype:	IgG
Clonality:	Polyclonal
Immunogen:	A portion of amino acid 150-200 of human MTSS1 protein was used as the immunogen.
Formulation:	PBS containing 0.05% BSA, 0.05% Sodium Azide. Store at 4C short term. Aliquot and store at -20C long term. Avoid freeze-thaw cycles.
Concentration:	lot specific
Purification:	Protein G purified
Conjugation:	Unconjugated
Storage:	Store at -20°C as received.
Stability:	Stable for 12 months from date of receipt.
Gene Name:	metastasis suppressor 1
Database Link:	<a href="#">NP_001269900</a> <a href="#">Entrez Gene 211401 Mouse</a> <a href="#">Entrez Gene 362918 Rat</a> <a href="#">Entrez Gene 9788 Human</a> <a href="#">O43312</a>
Synonyms:	MIM; MIMA; MIMB
Protein Families:	Druggable Genome



[View online »](#)

## Product images:



Western Blot: MTSS1 Antibody TA337043 -  
Western blot analysis of MTSS1 in testis lysate: 1)  
pre immune sera, 2) human, 3) mouse and 4) rat  
testis using TA337043 at 4 ug/ml, 2 ug/ml and 2  
ug/ml, respectively.