

Product datasheet for **TA337041**

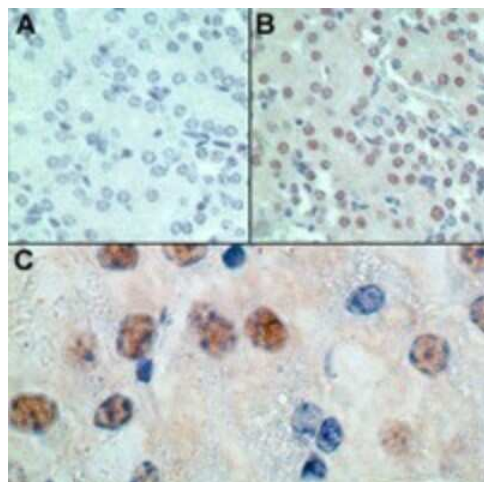
MSX1 Rabbit Polyclonal Antibody

Product data:

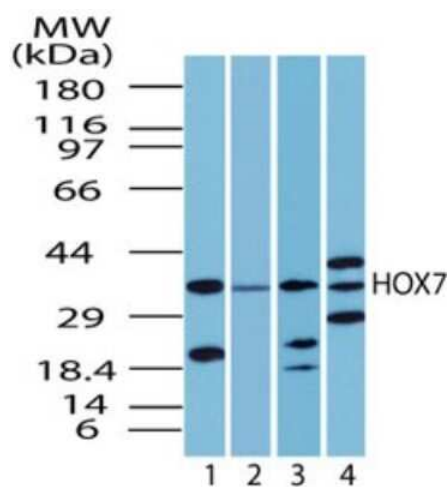
Product Type:	Primary Antibodies
Applications:	IHC, WB
Recommended Dilution:	Immunohistochemistry, Immunohistochemistry-Paraffin: 2.5-5 ug/ml, Western Blot: 1-3 ug/ml
Reactivity:	Human, Mouse, Rat, Primate
Host:	Rabbit
Isotype:	IgG
Clonality:	Polyclonal
Immunogen:	A portion of amino acids 50-100 of human HOX7 was used as the immunogen.
Formulation:	PBS containing 0.05% BSA, 0.05% Sodium Azide. Store at 4C short term. Aliquot and store at -20C long term. Avoid freeze-thaw cycles.
Concentration:	lot specific
Purification:	Protein G purified
Conjugation:	Unconjugated
Storage:	Store at -20°C as received.
Stability:	Stable for 12 months from date of receipt.
Gene Name:	msh homeobox 1
Database Link:	NP_002439 Entrez Gene 17701 Mouse Entrez Gene 81710 Rat Entrez Gene 4487 Human P28360
Synonyms:	ECTD3; HOX7; HYD1; STHAG1
Protein Families:	Druggable Genome, Transcription Factors



[View online »](#)

Product images:


Immunohistochemistry-Paraffin: MSX1 Antibody TA337041 - Analysis of HOX7 expression in formalin-fixed, paraffin embedded normal mouse liver tissue. A: Staining with rabbit IgG (isotype control) at 2.5 ug/ml. B: Staining with rabbit anti-HOX7 at 2.5 ug/ml. C: Higher magnification of B, showing nuclear expression of HOX7.



Western Blot: MSX1 Antibody TA337041 - Analysis of human HOX7 in human liver lysate in the 1) absence, 2) presence of immunizing peptide, 3) mouse and 4) rat liver using TA337041 at 2 ug/ml.